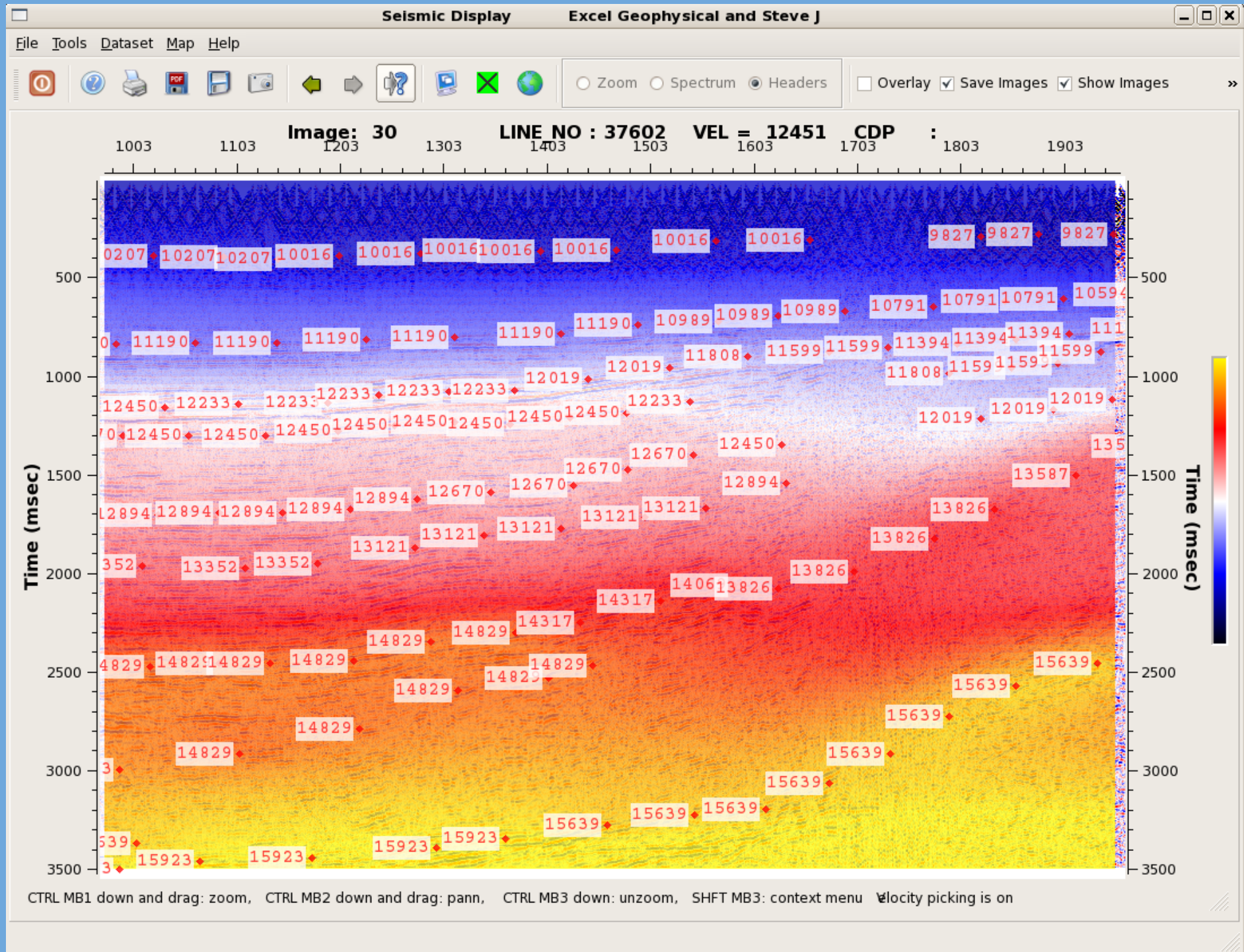
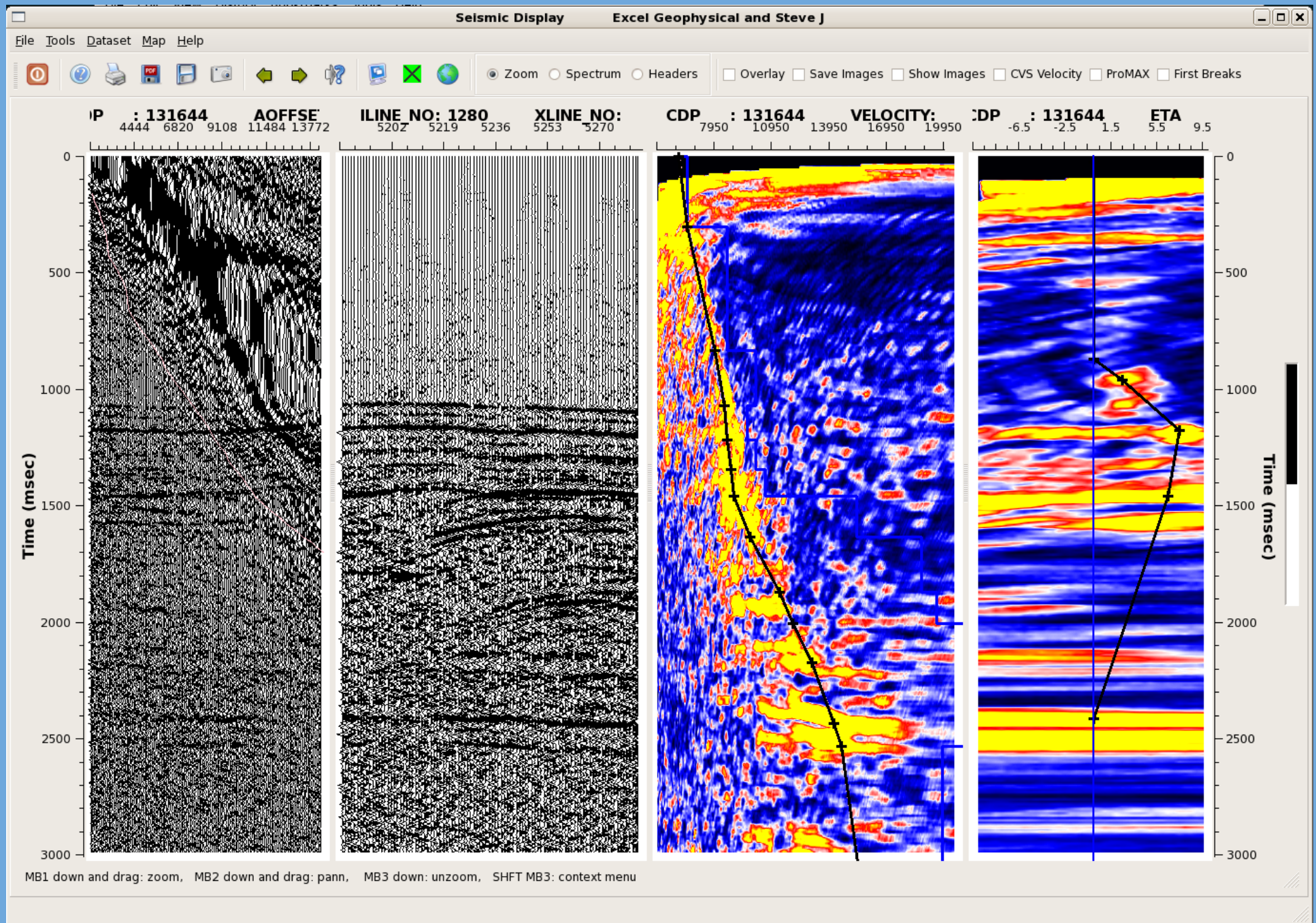


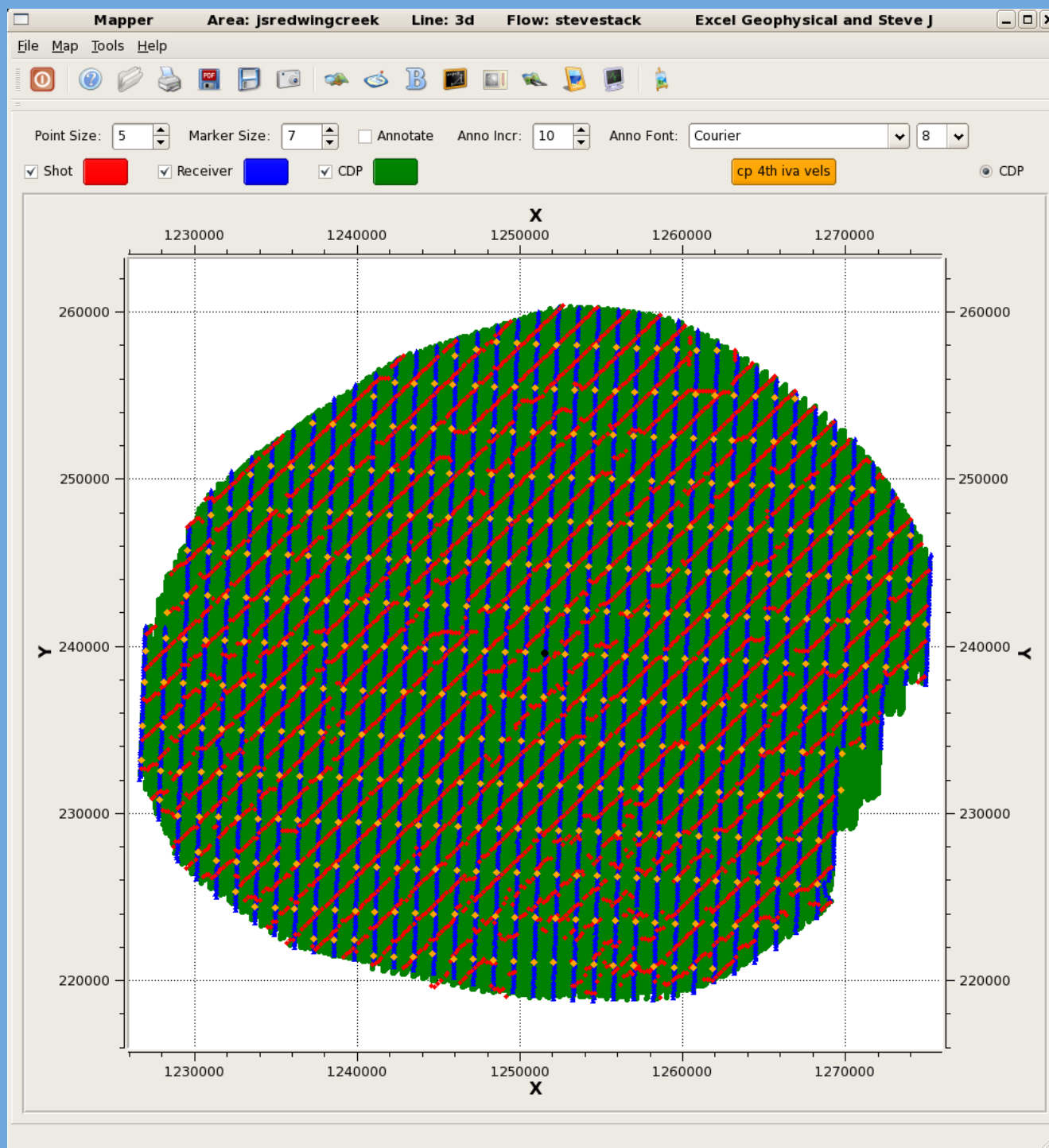
Crestone
Seismic Software
Toolkit
2011



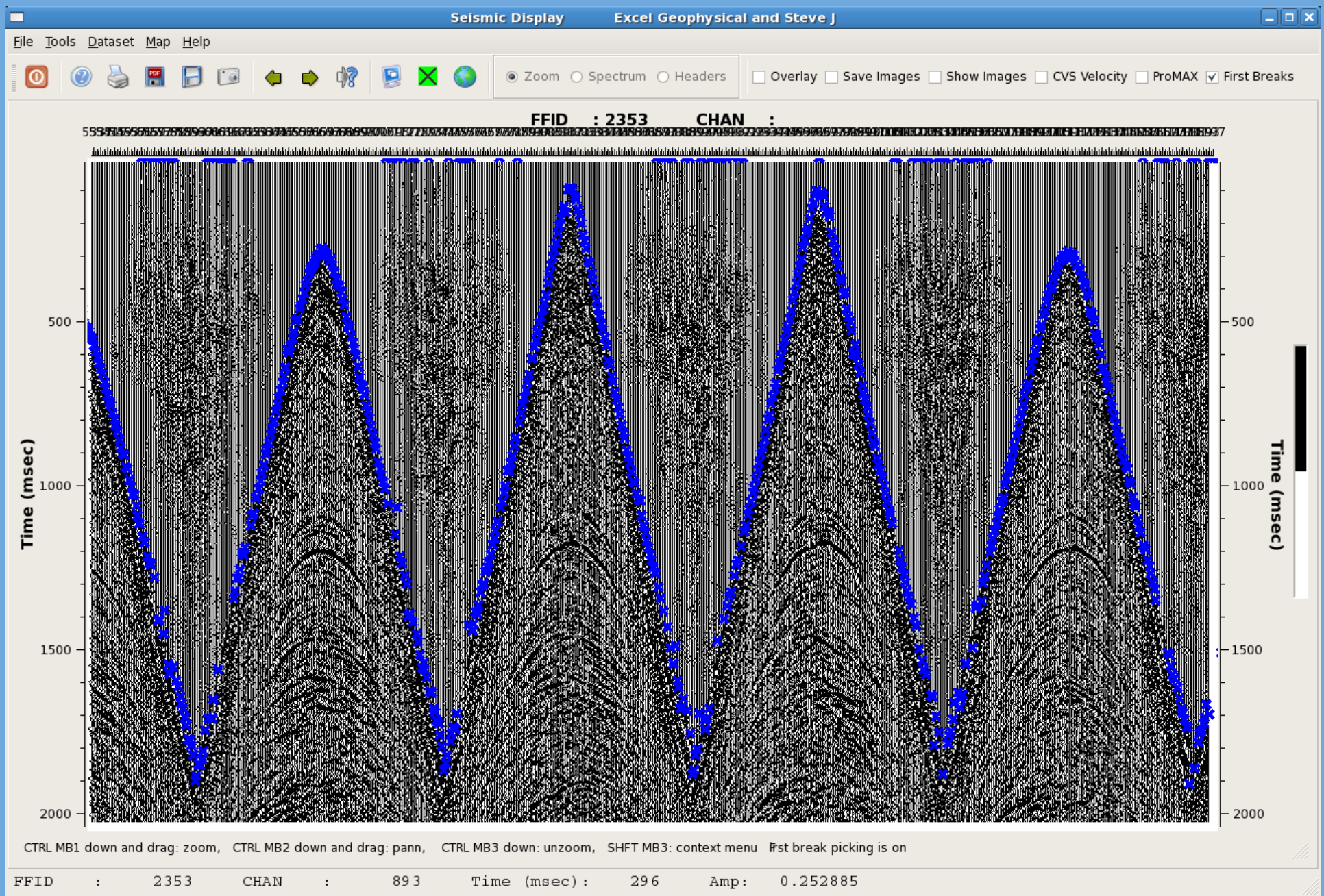
CVS Velocity Analysis



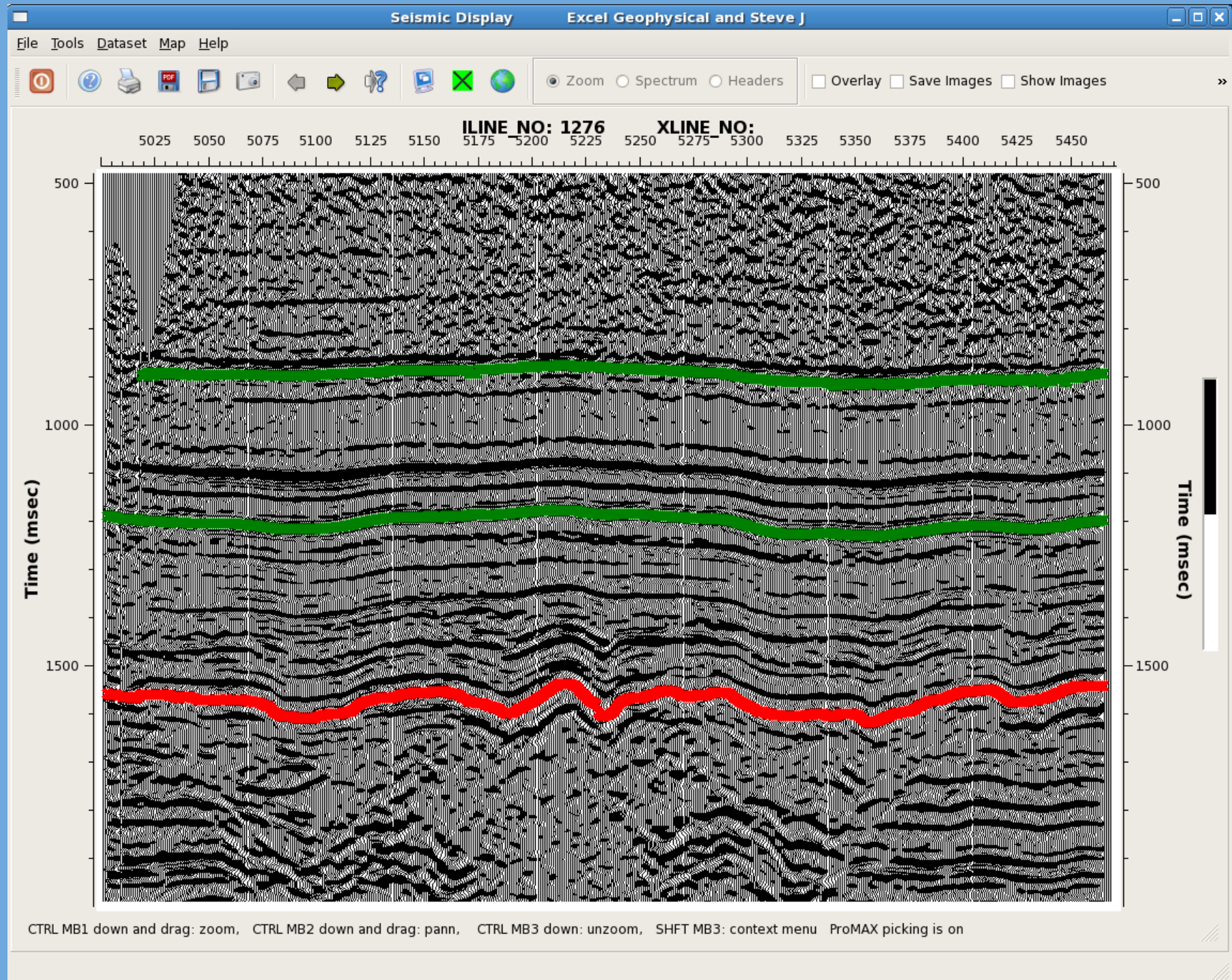
Semblance Velocity Analysis



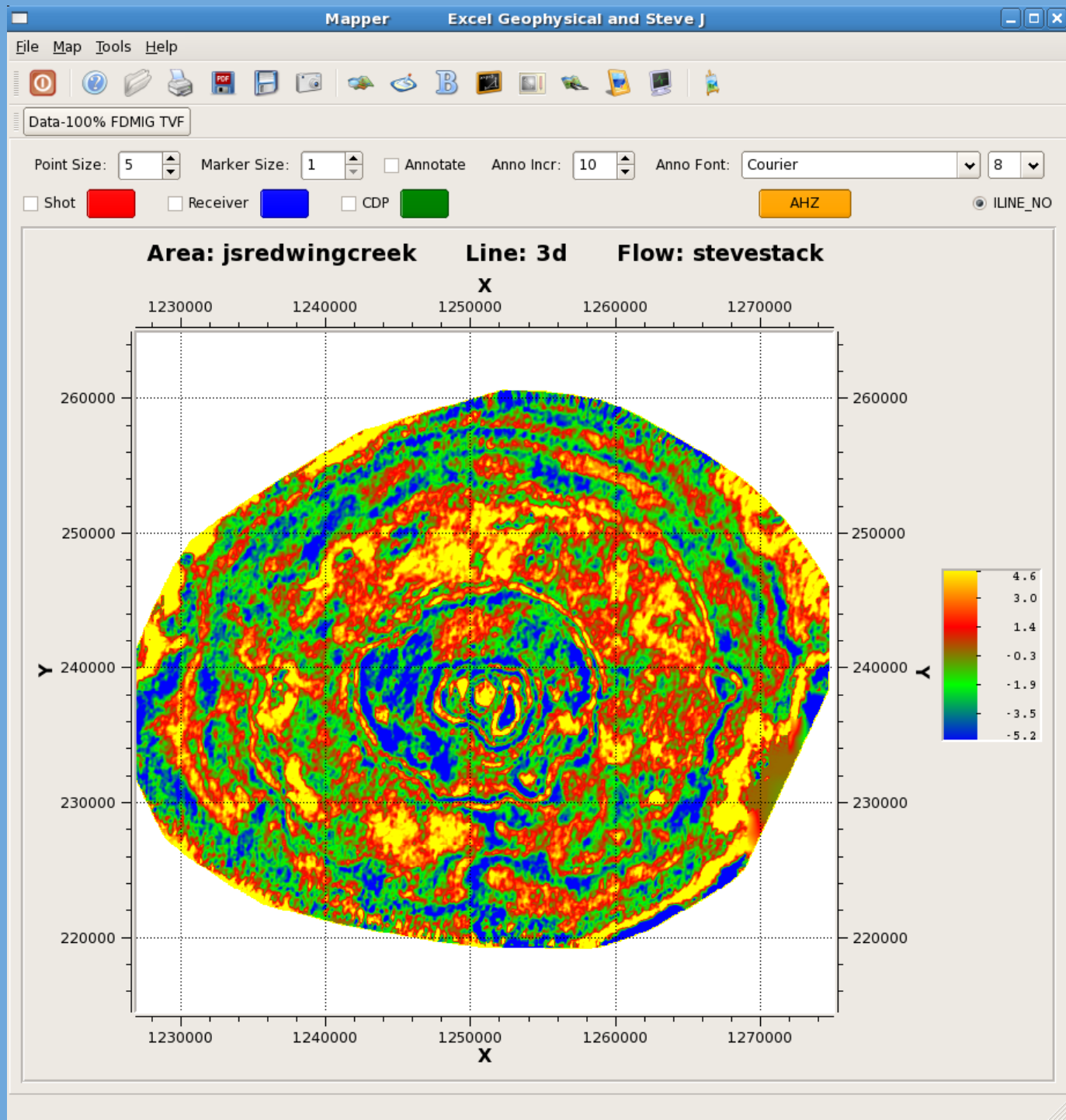
Mapper during Velocity Analysis



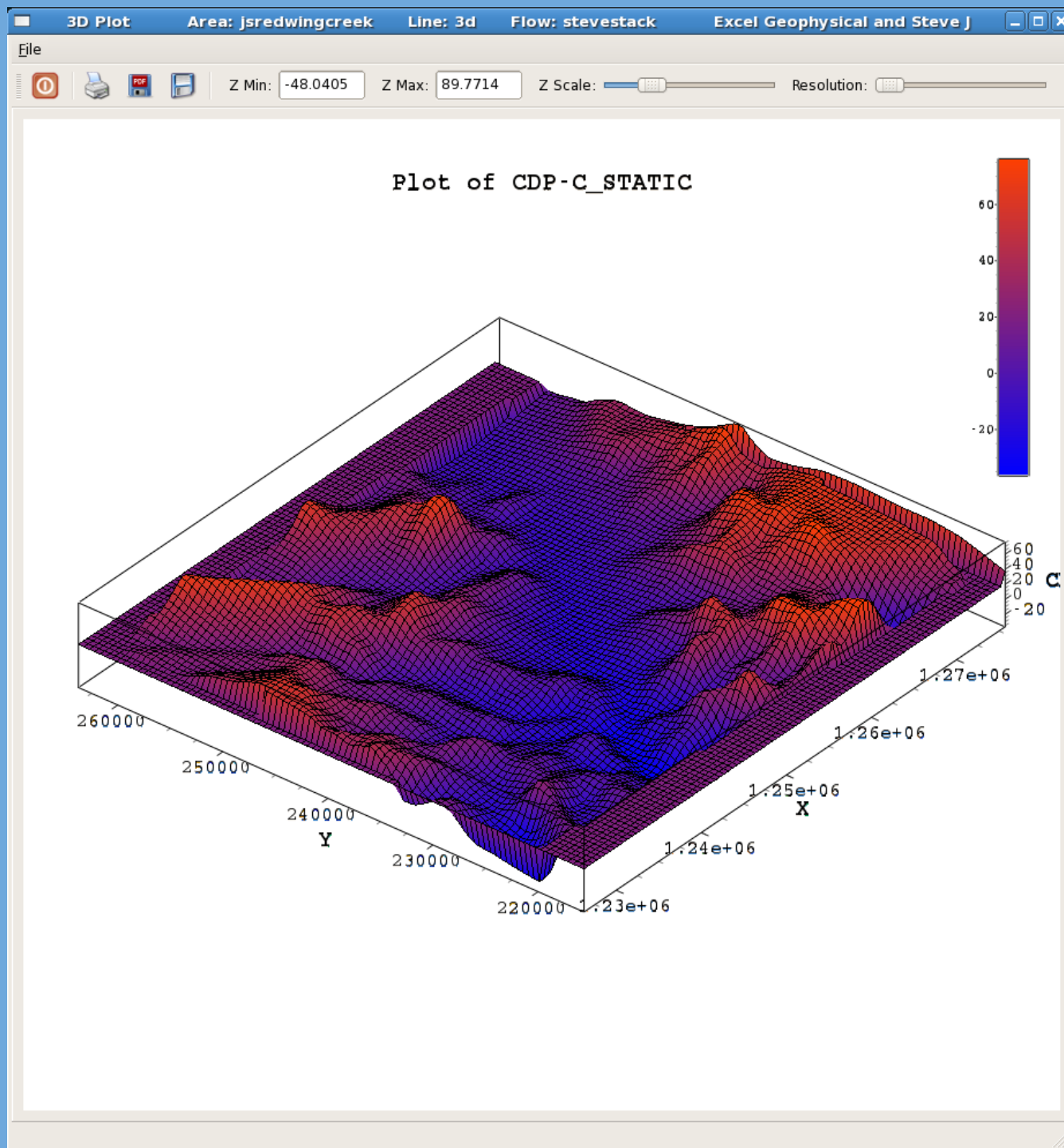
First Break Picking



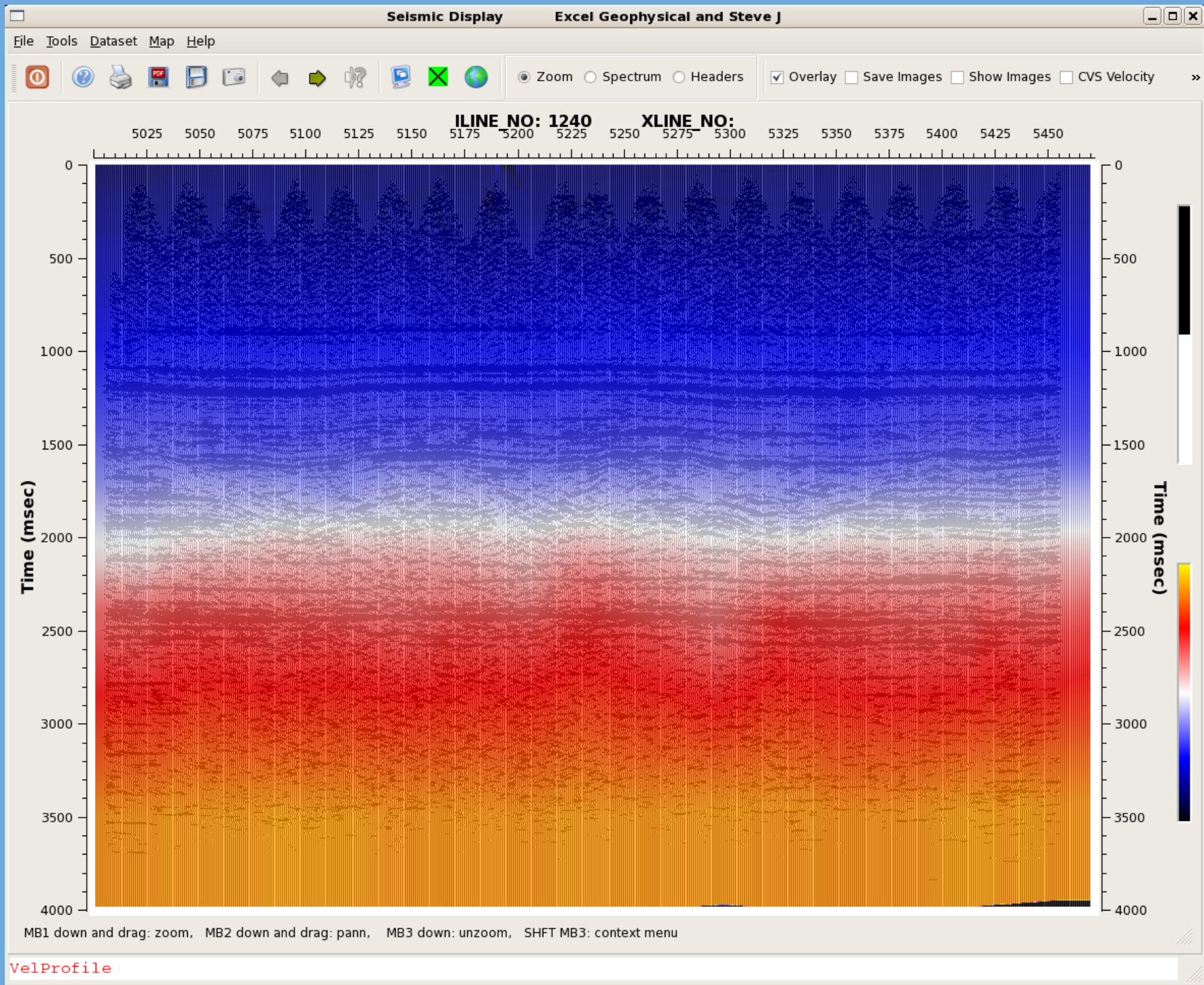
ProMAX Horizon Picking



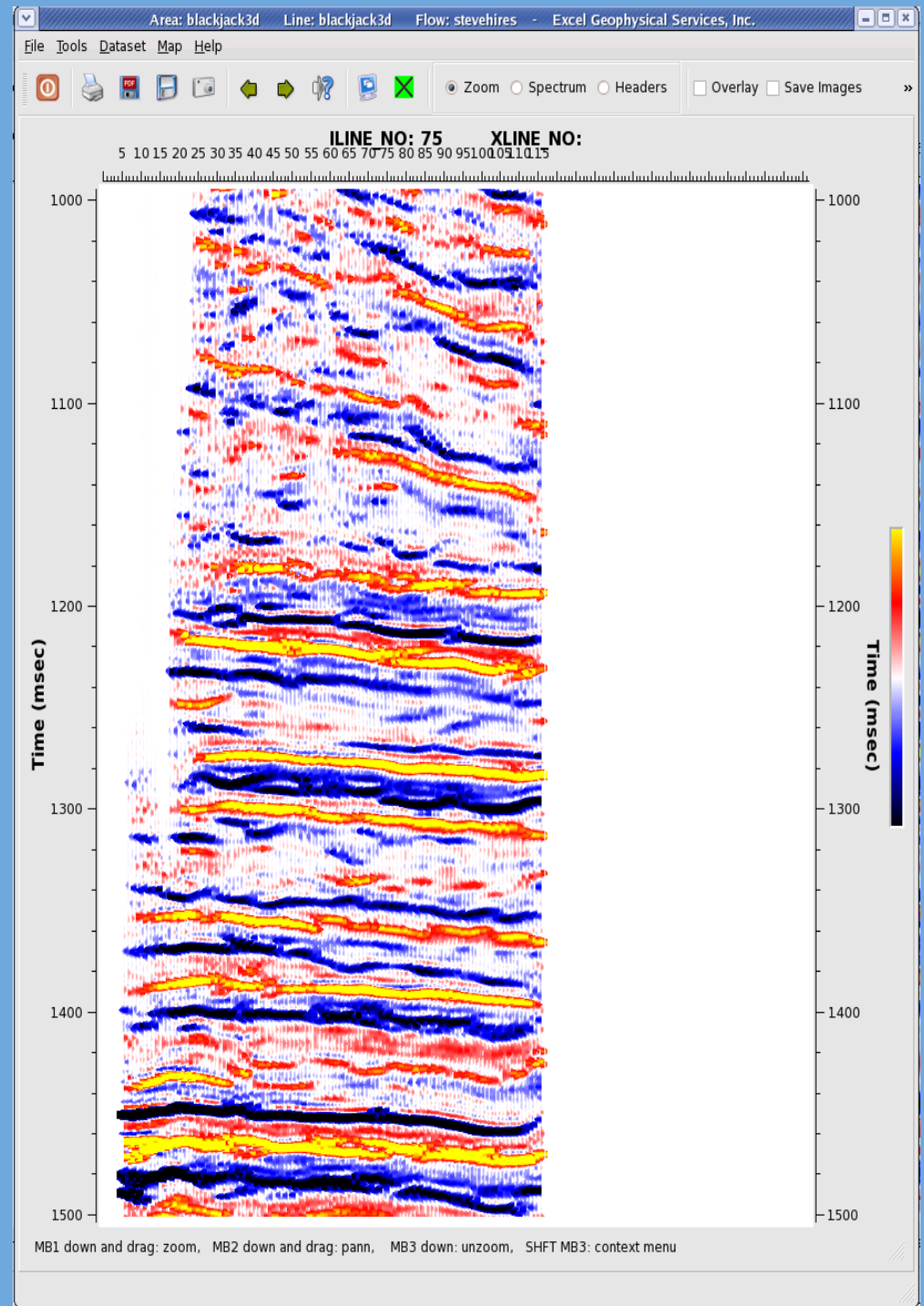
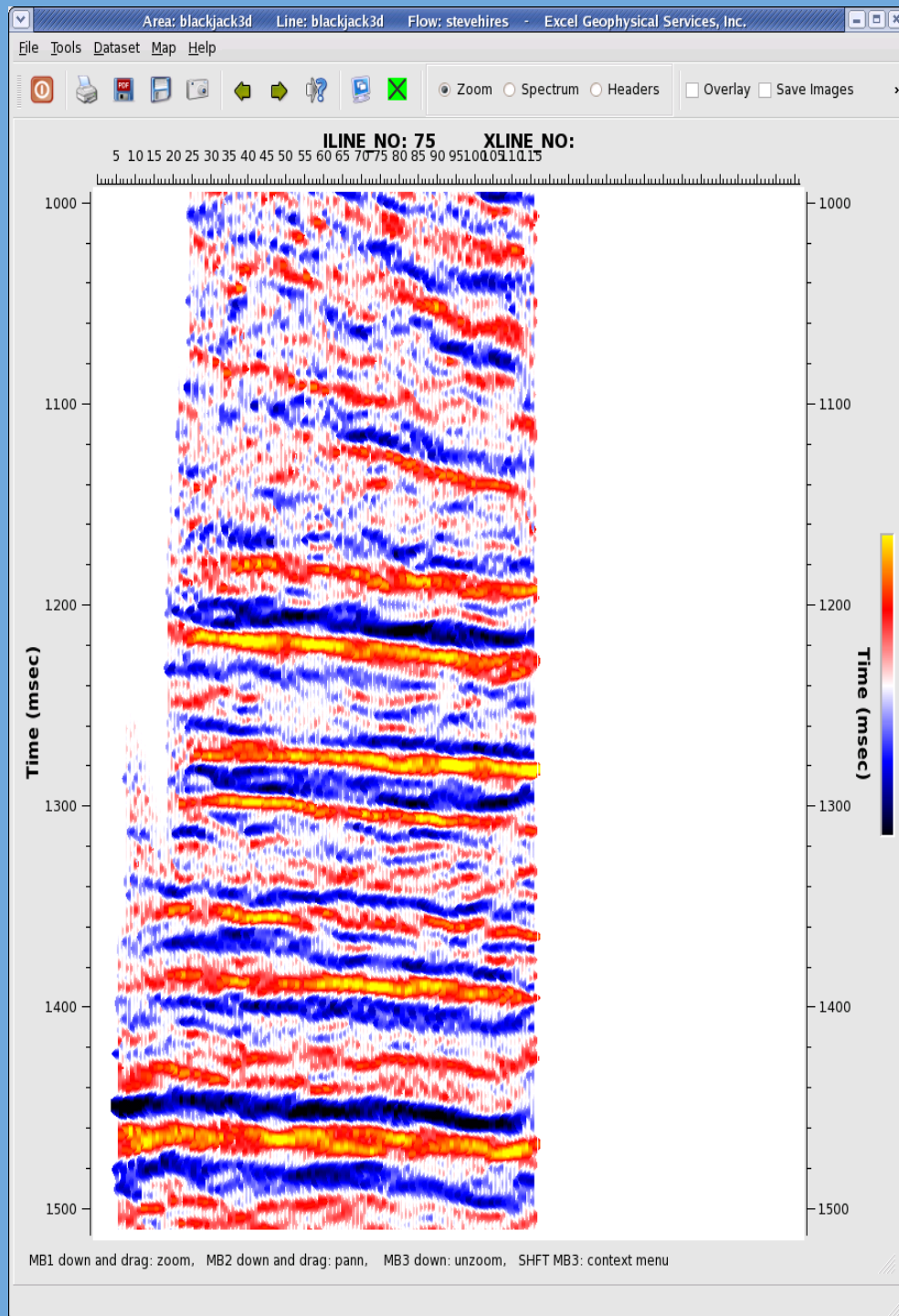
Mapper Attribute Draw



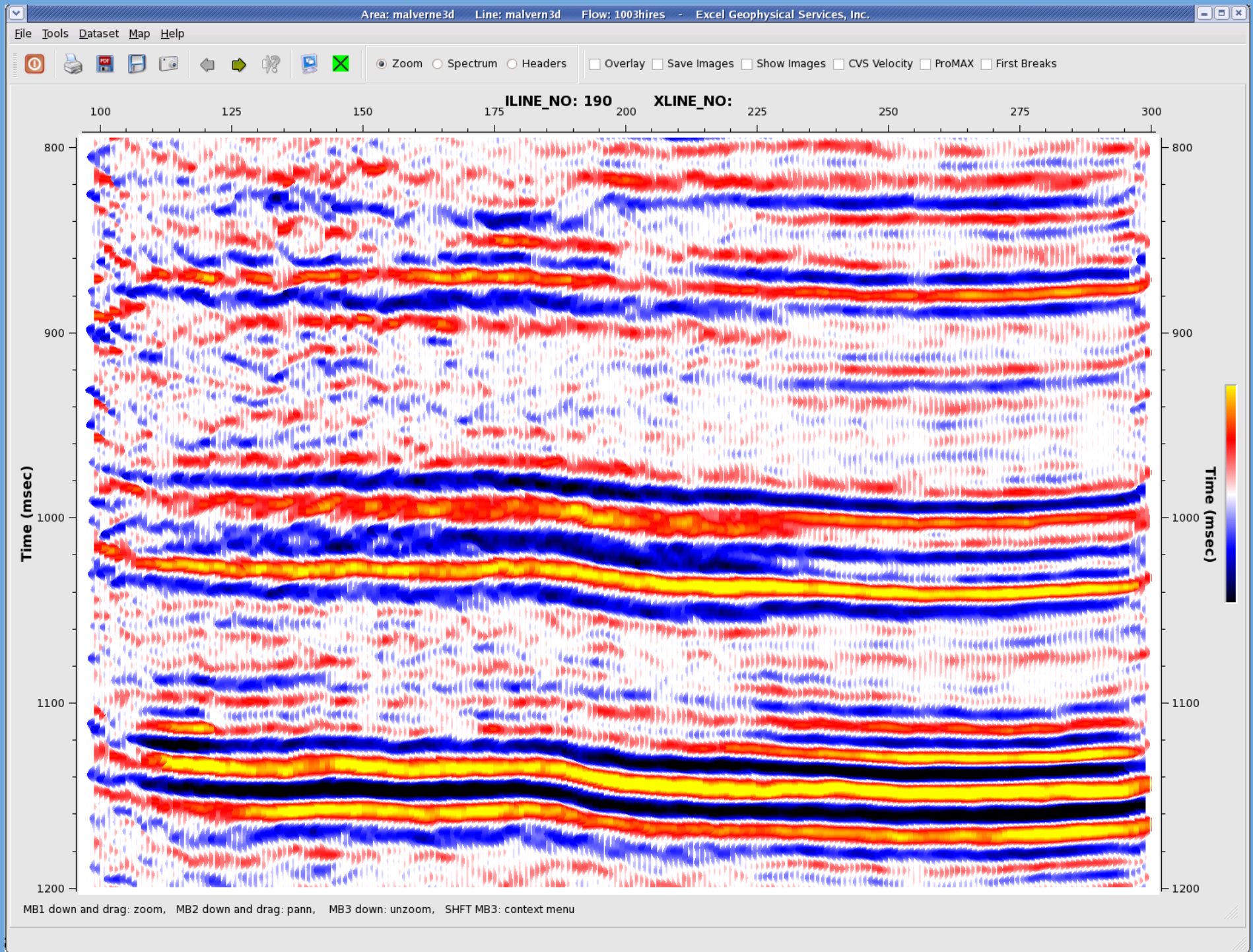
Mapper 3D Attribute Plot



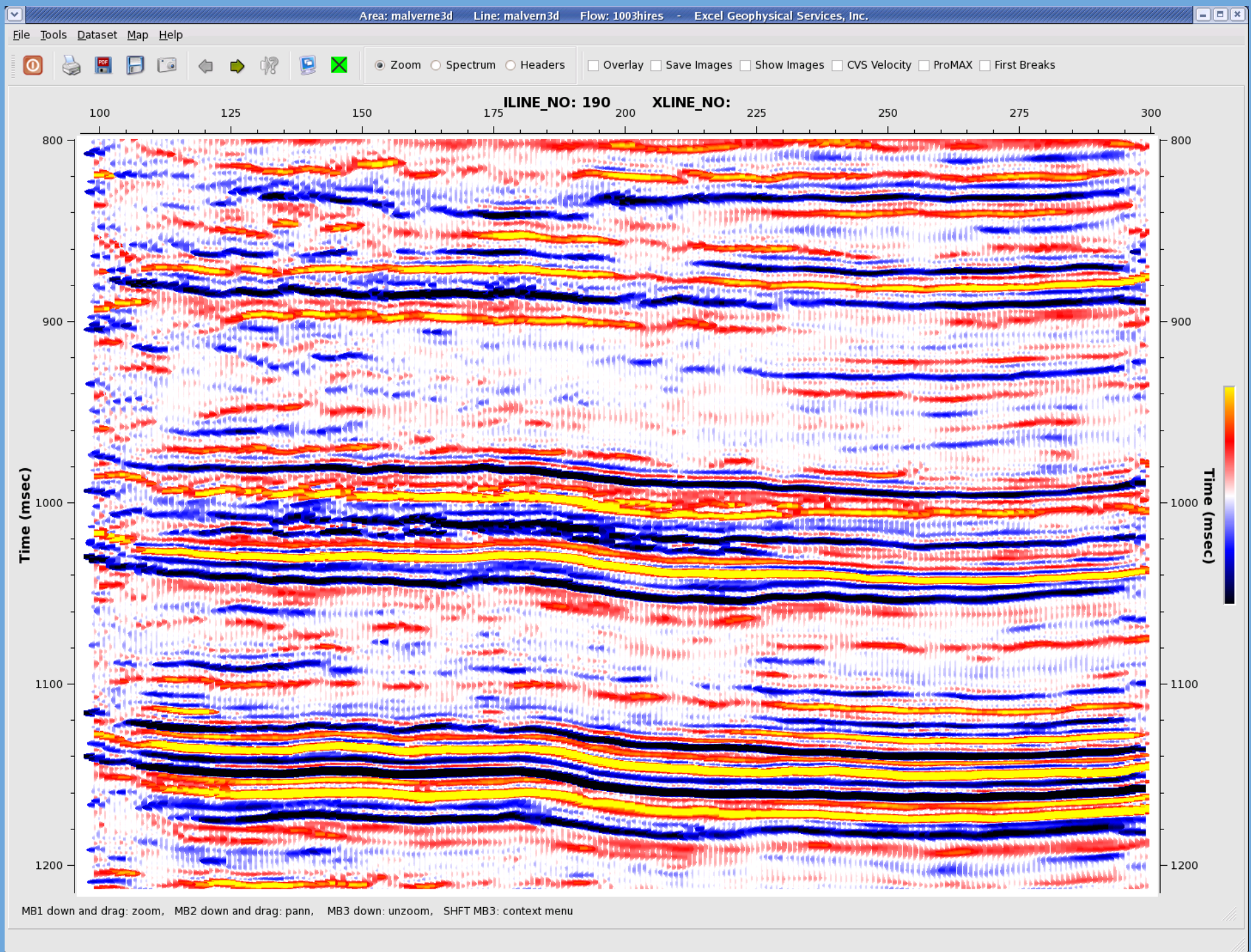
Velocity Profile



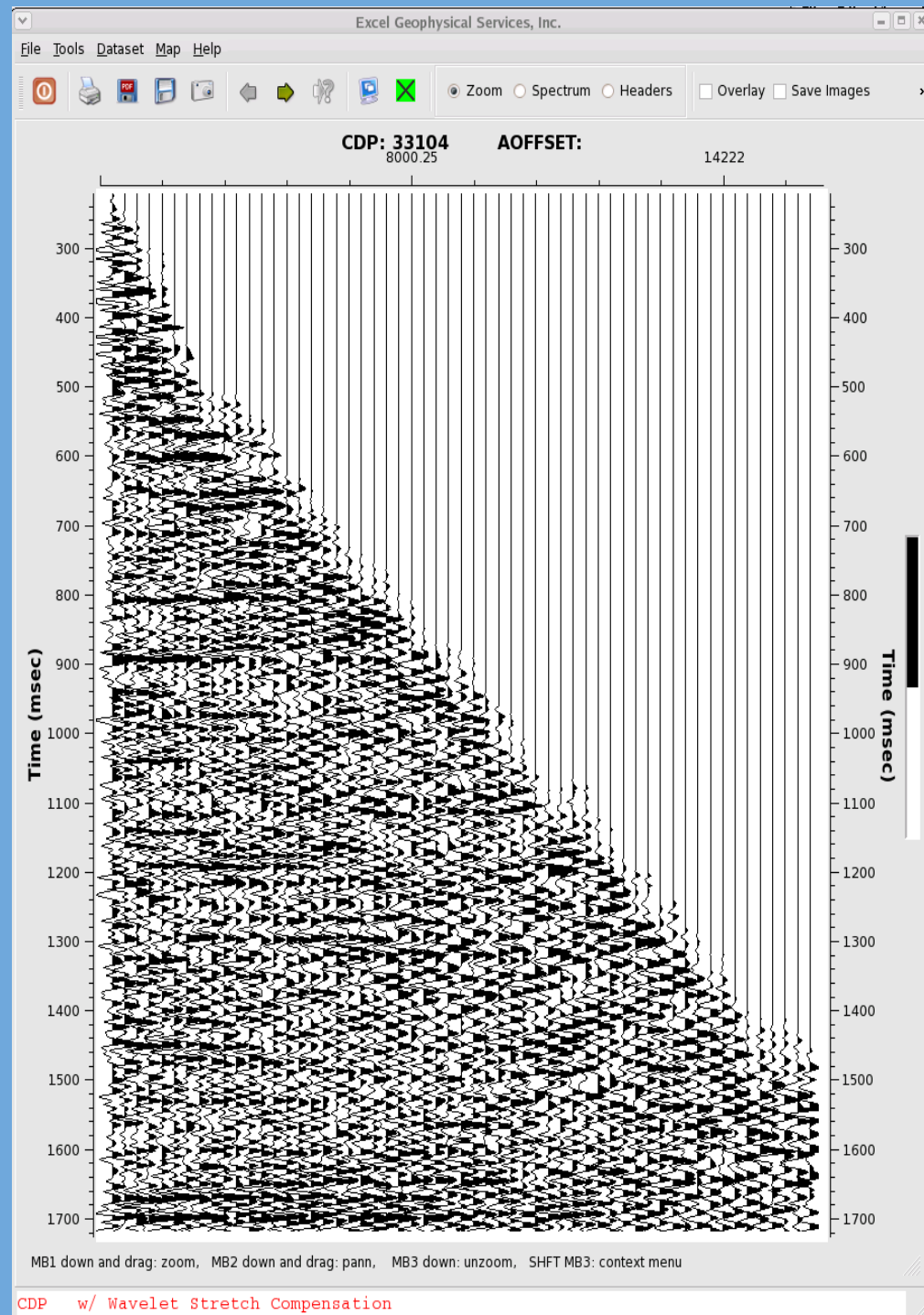
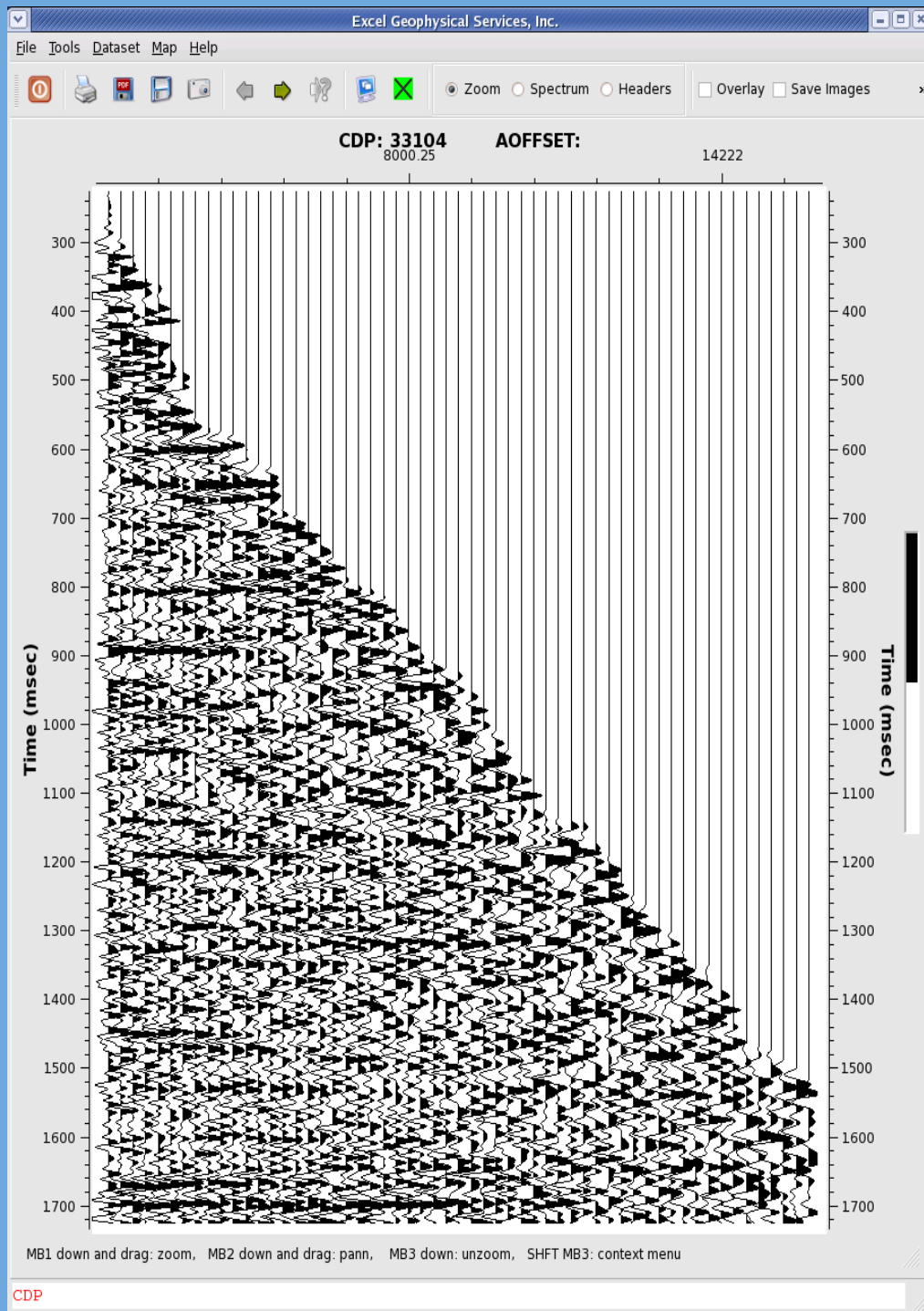
3D High Frequency Enhancement



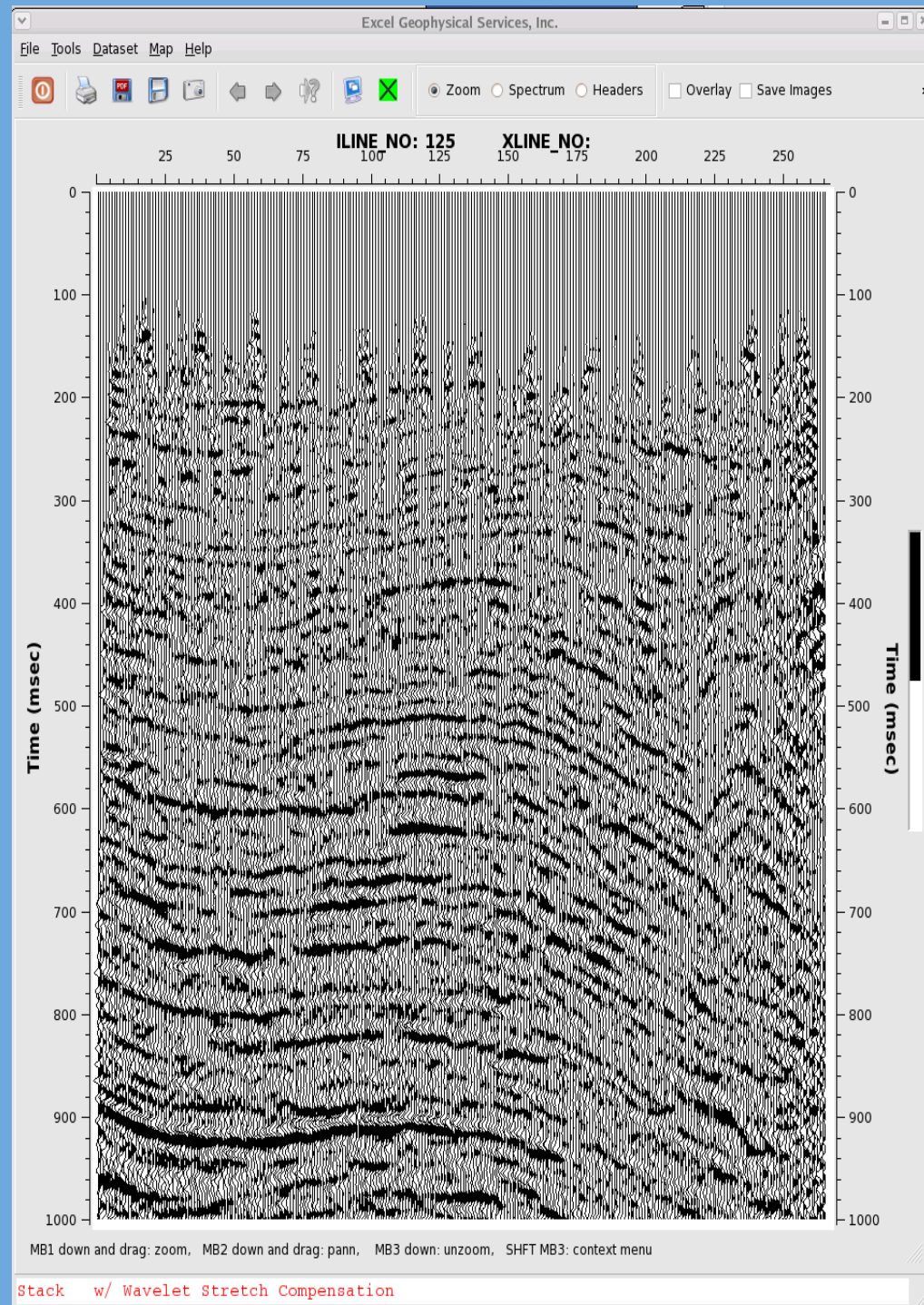
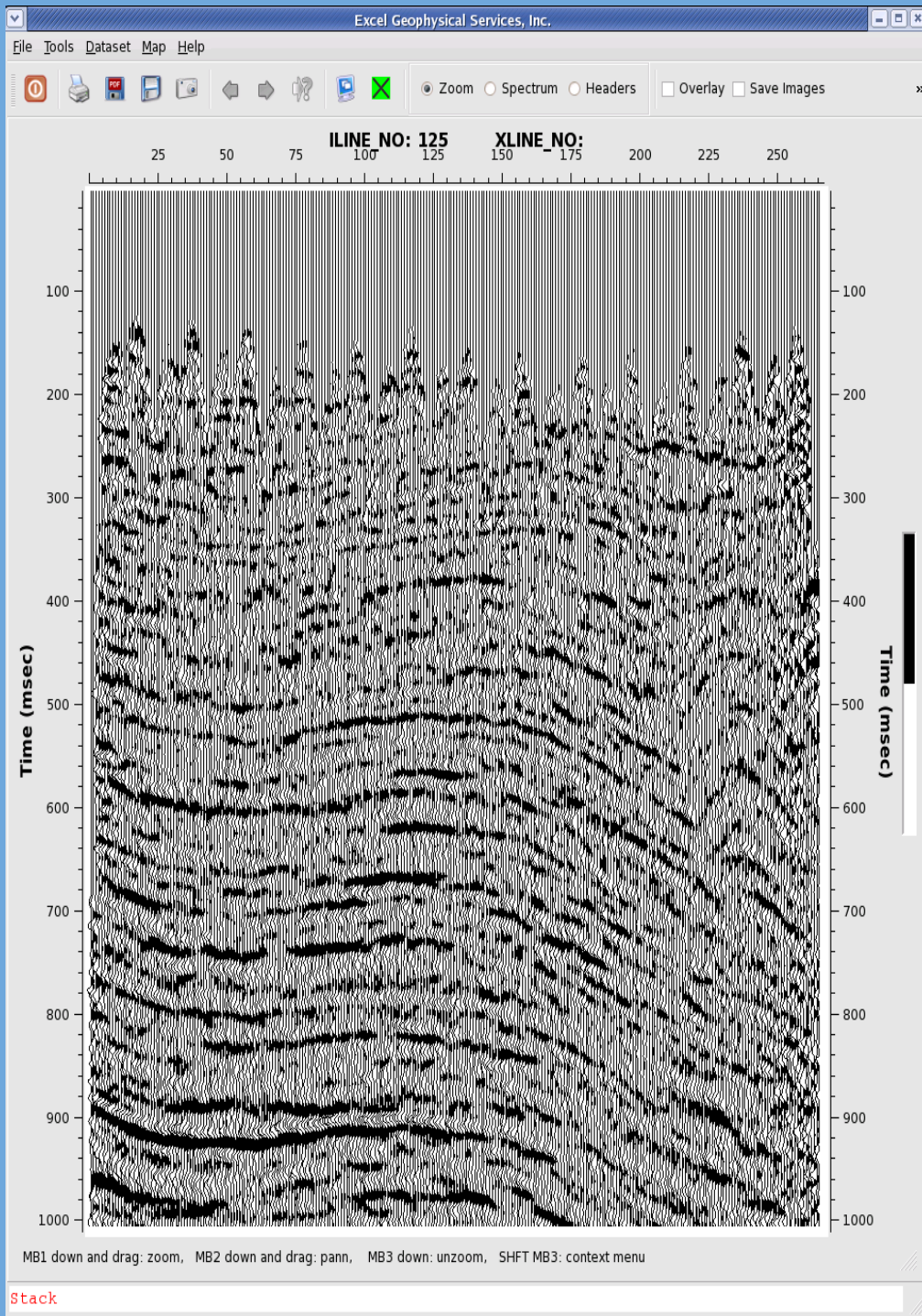
Normal Stack - Marcellus Shale



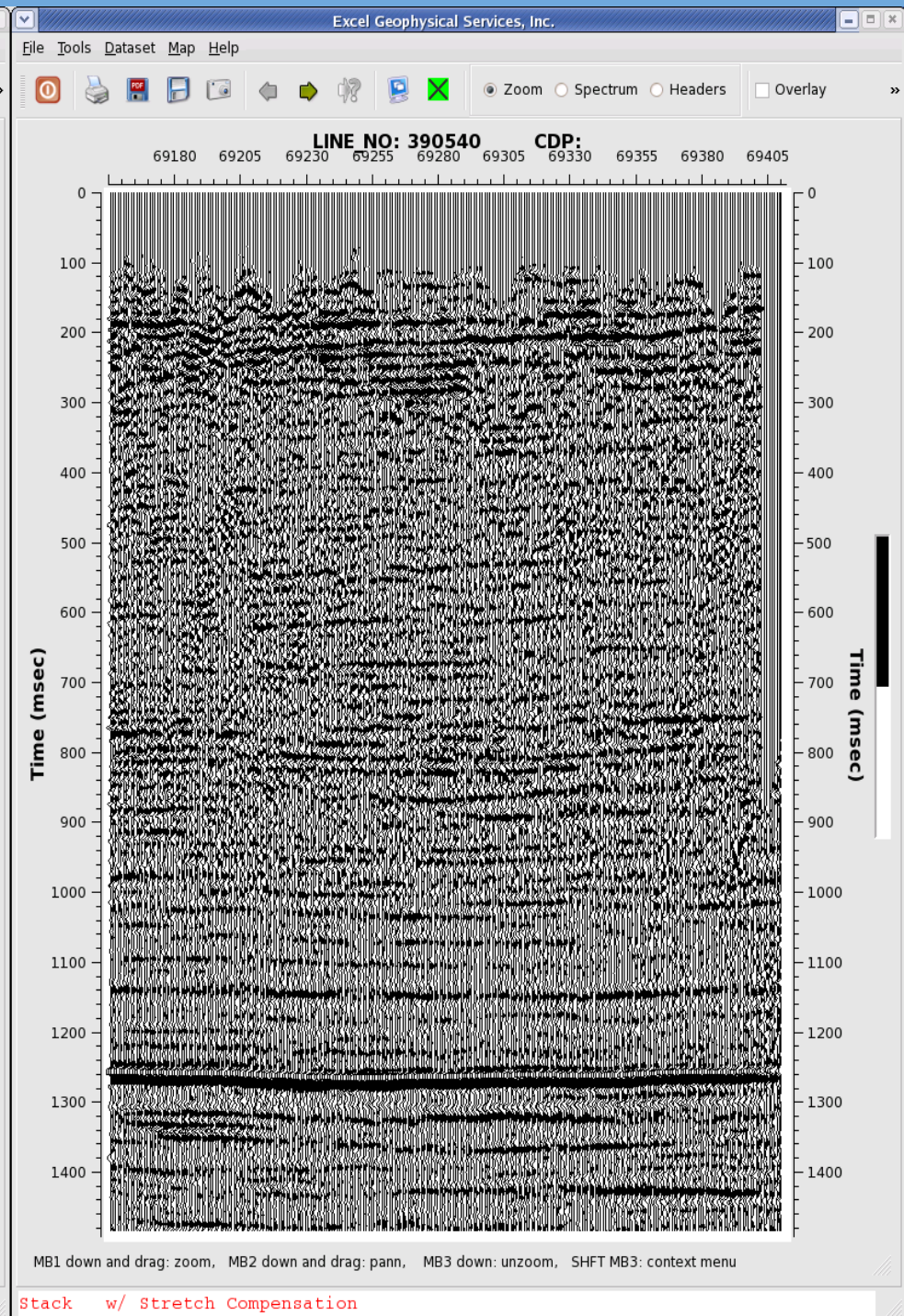
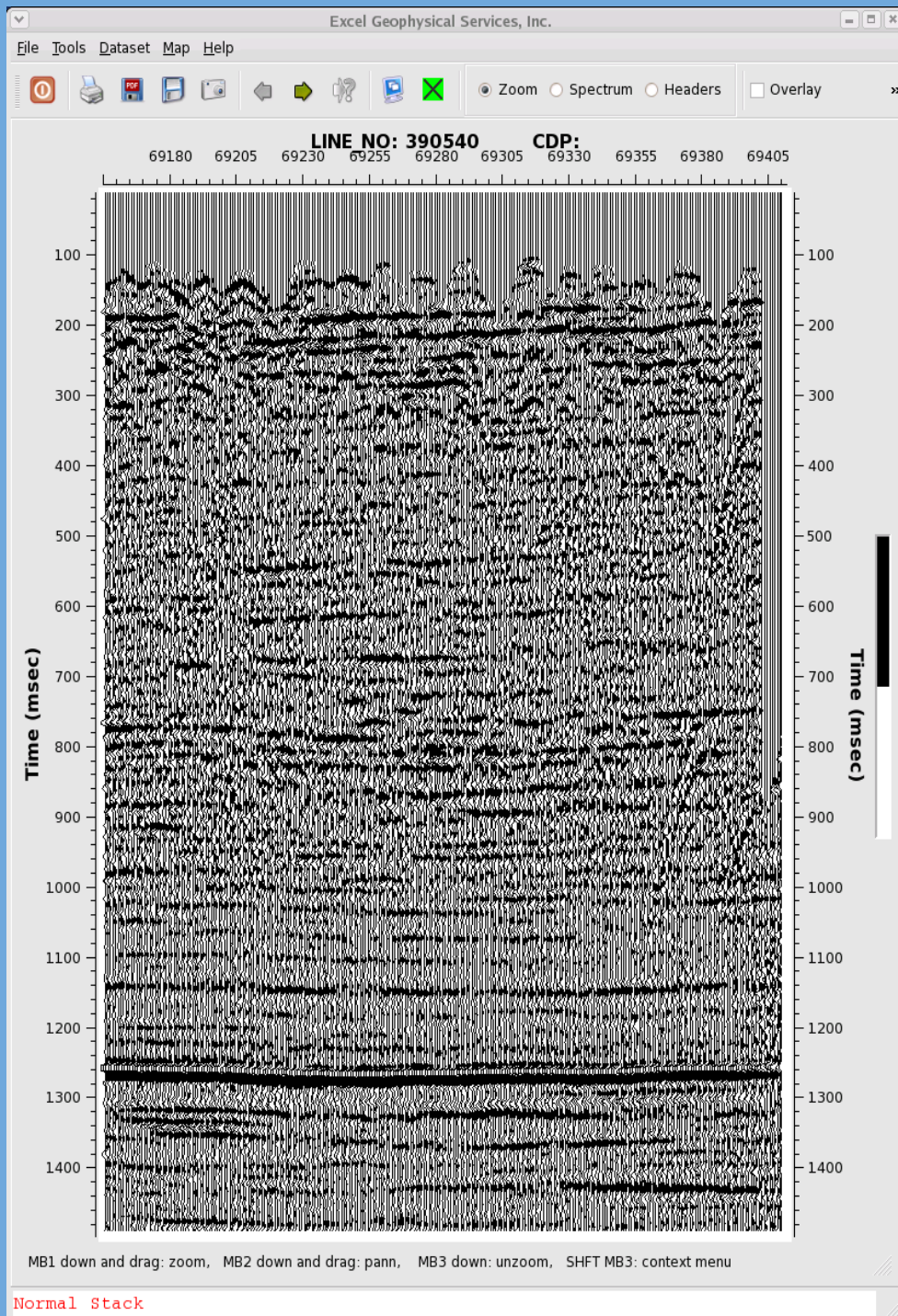
HiRes Stack - Marcellus Shale



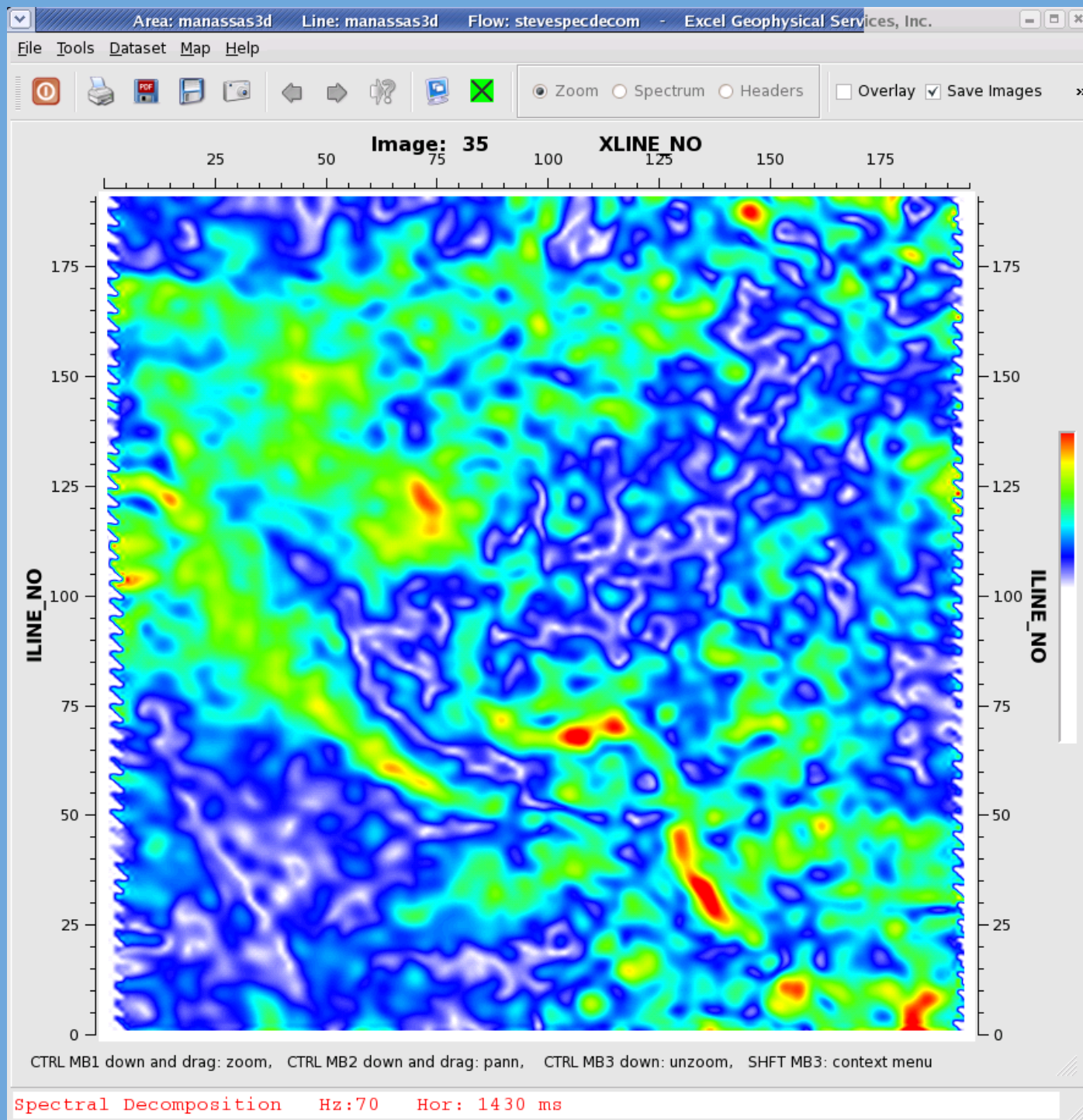
CDP Gather w/ Stretch Compensation



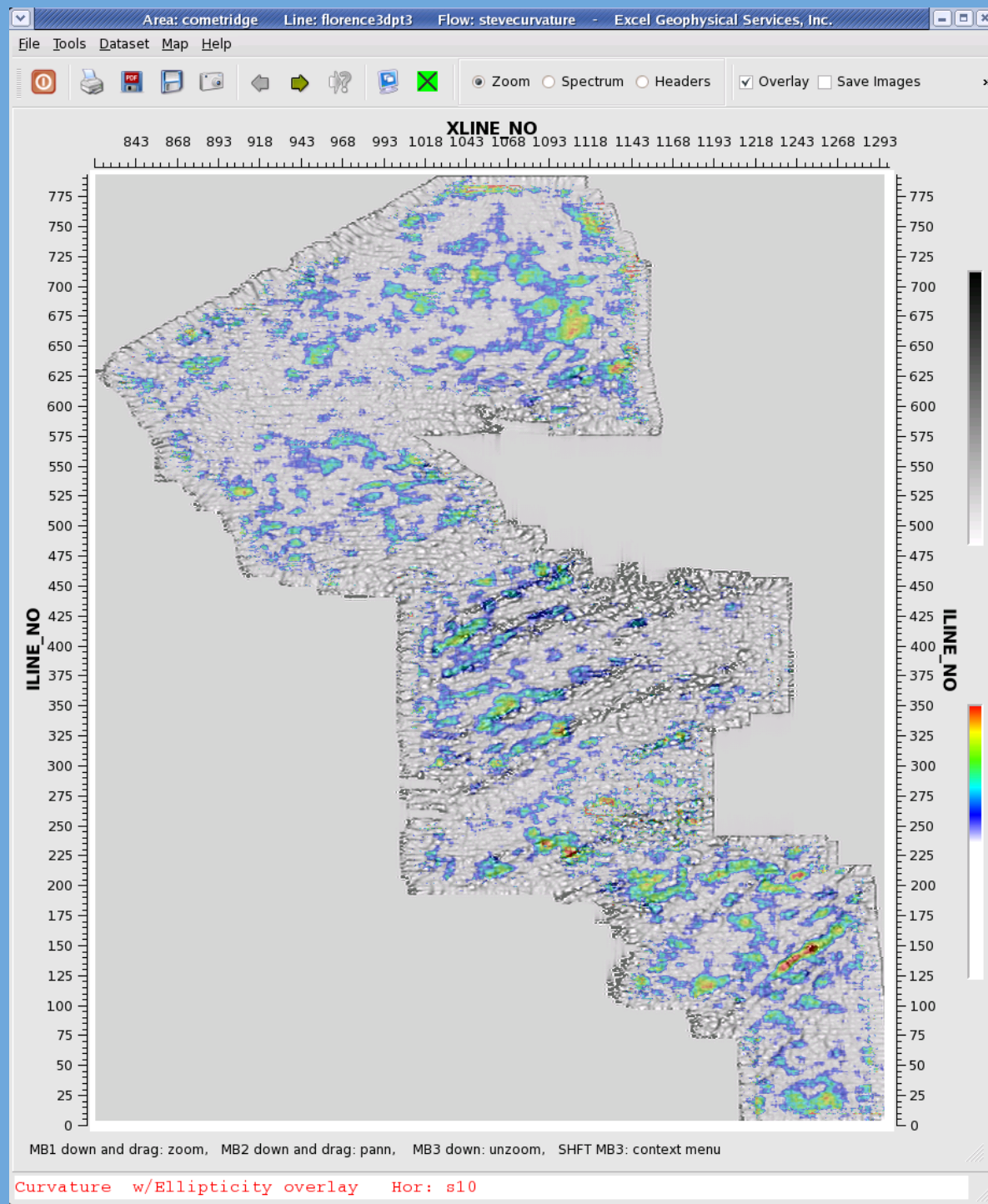
Stack w/ Stretch Compensation



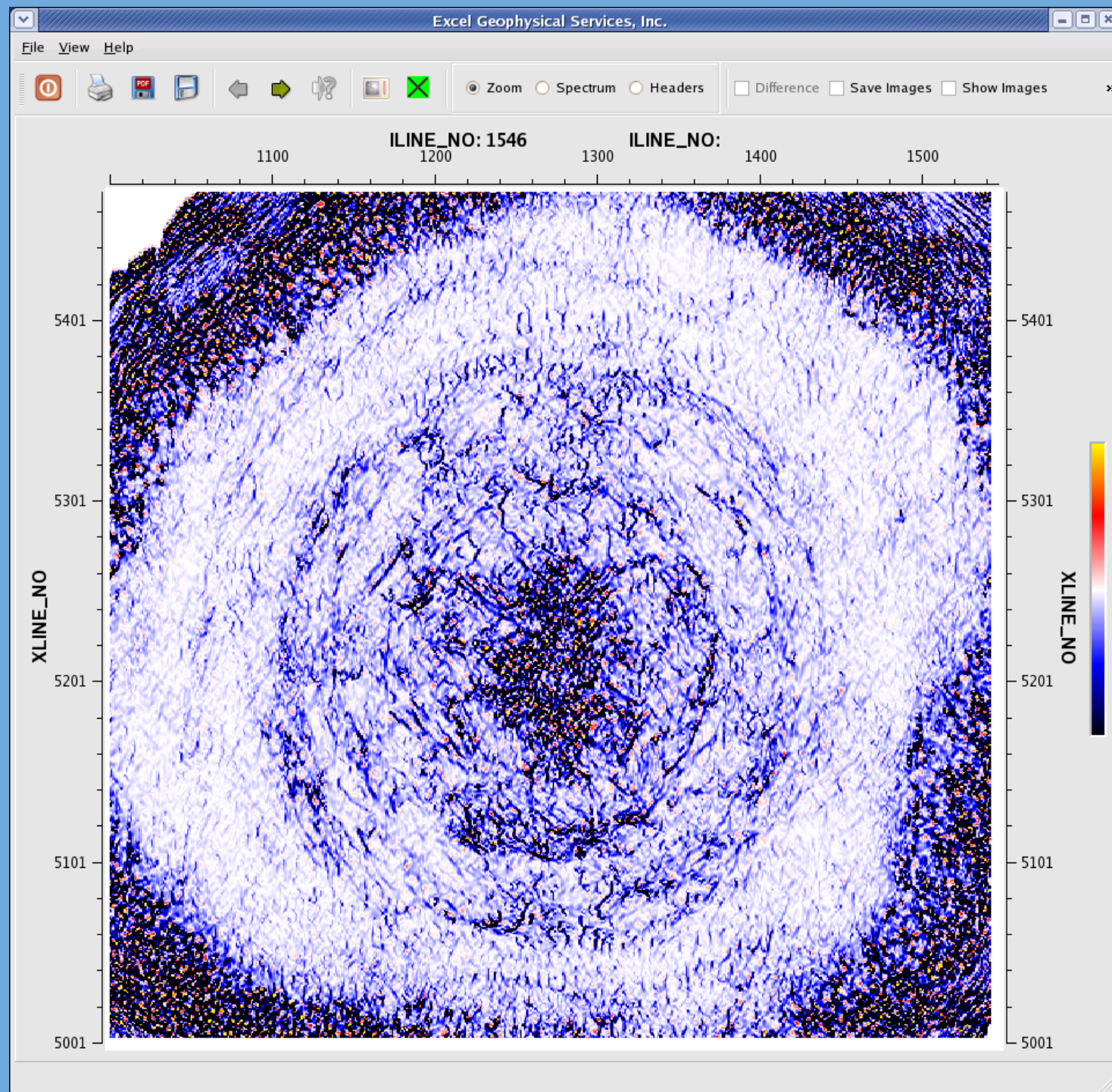
Stack w/ Stretch Compensation



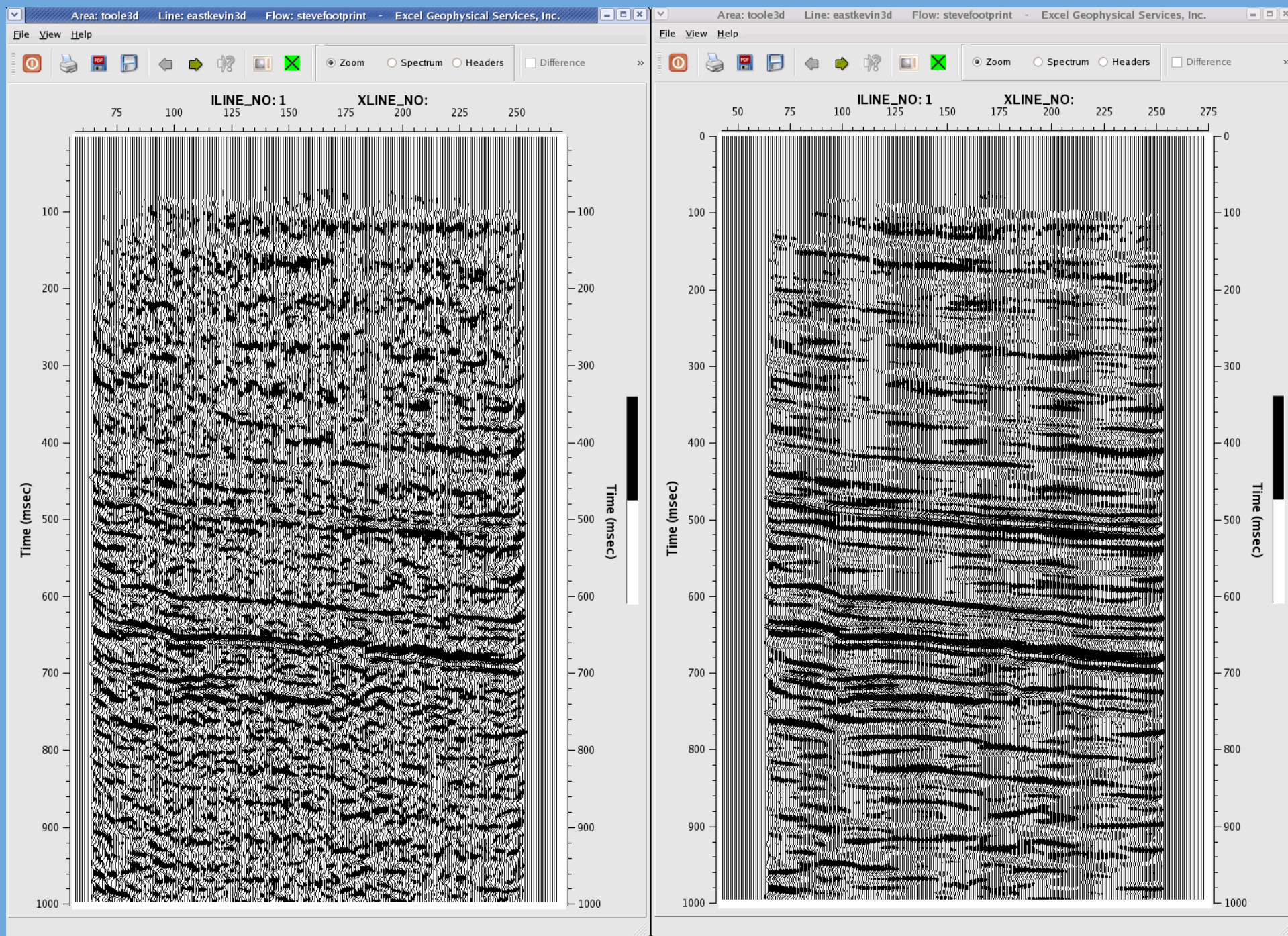
Spectral Decomposition



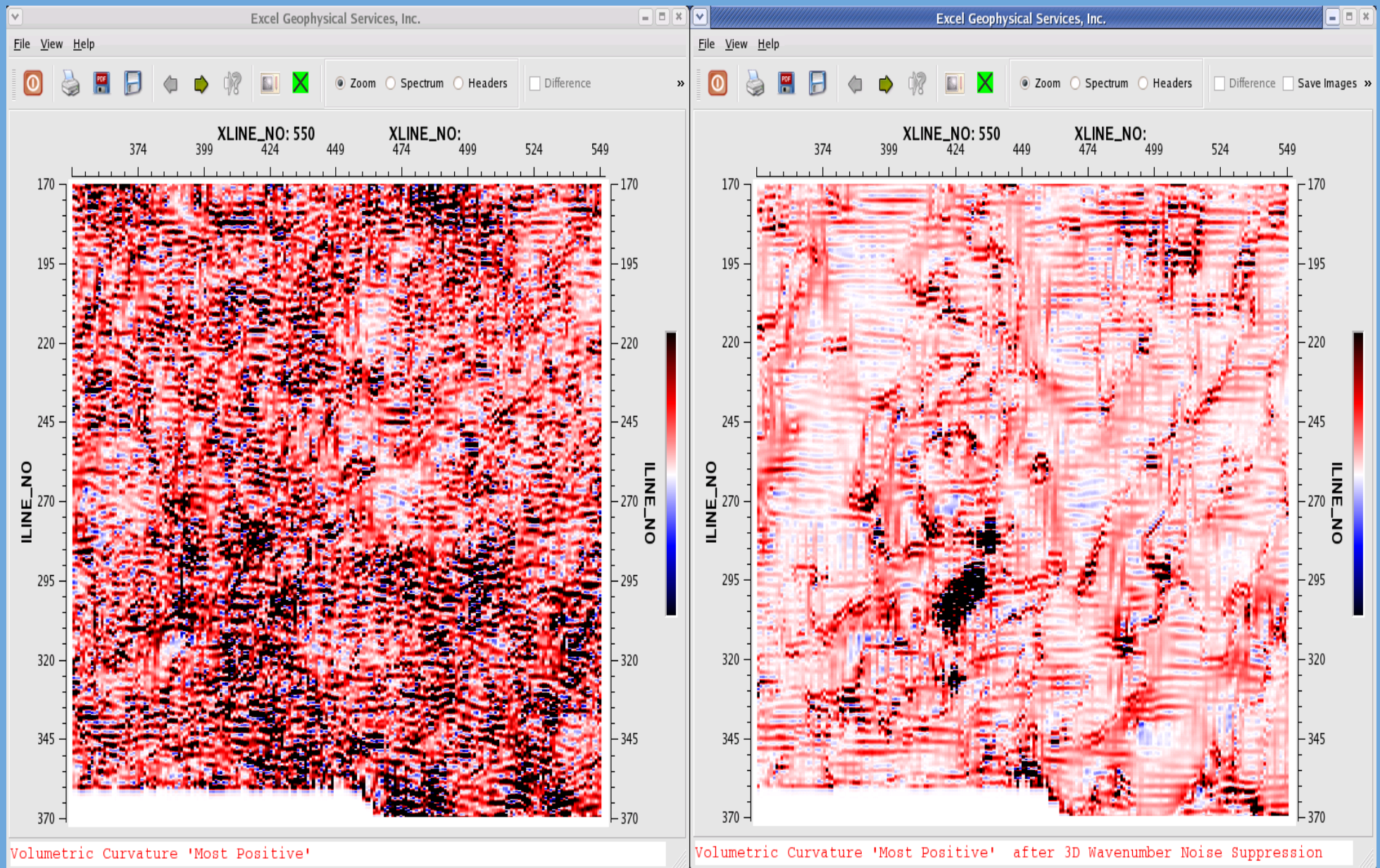
Volumetric Curvature w/ Ellipticity overlay



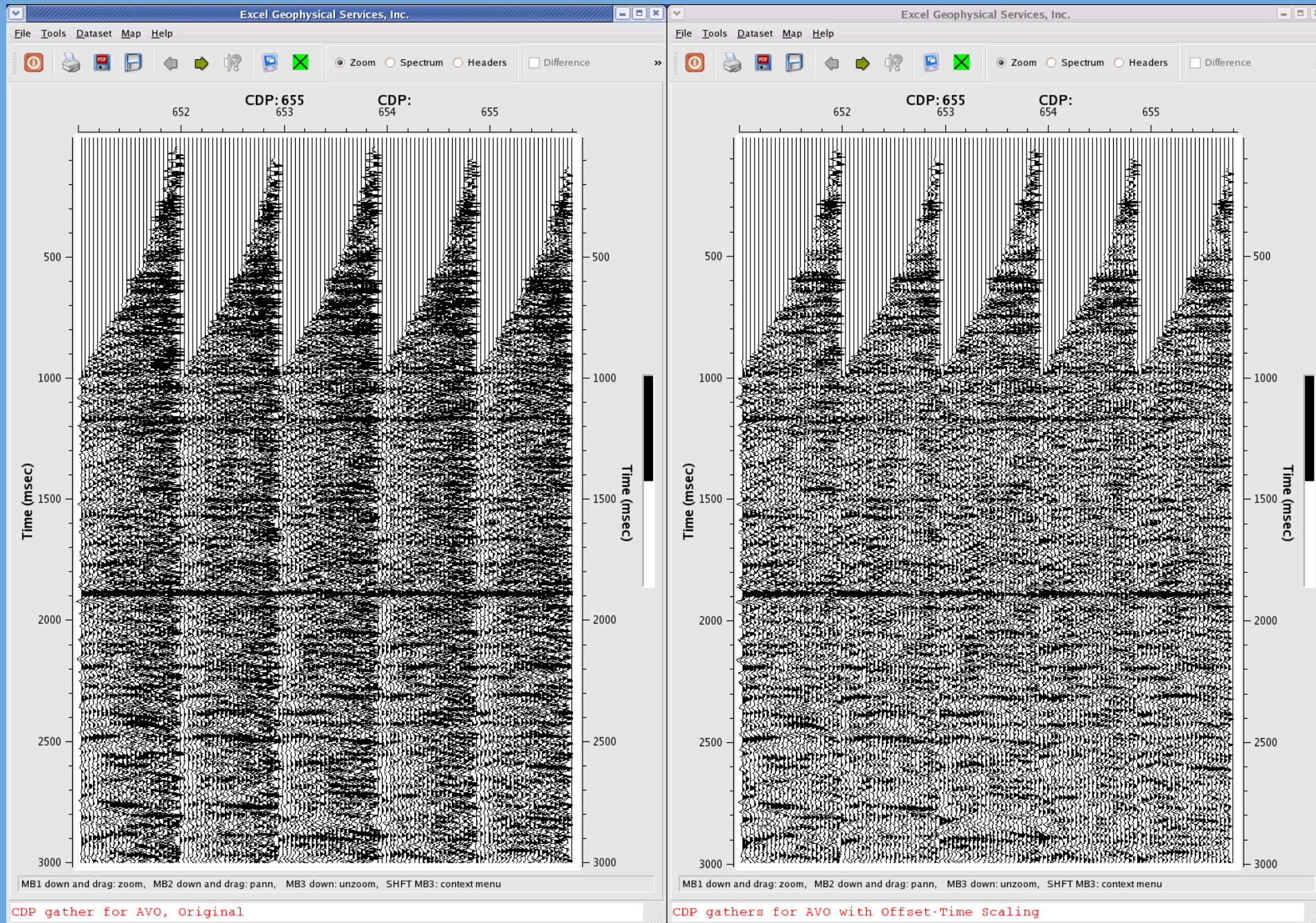
Volumetric Curvature 'Most Positive' exp: 0.1



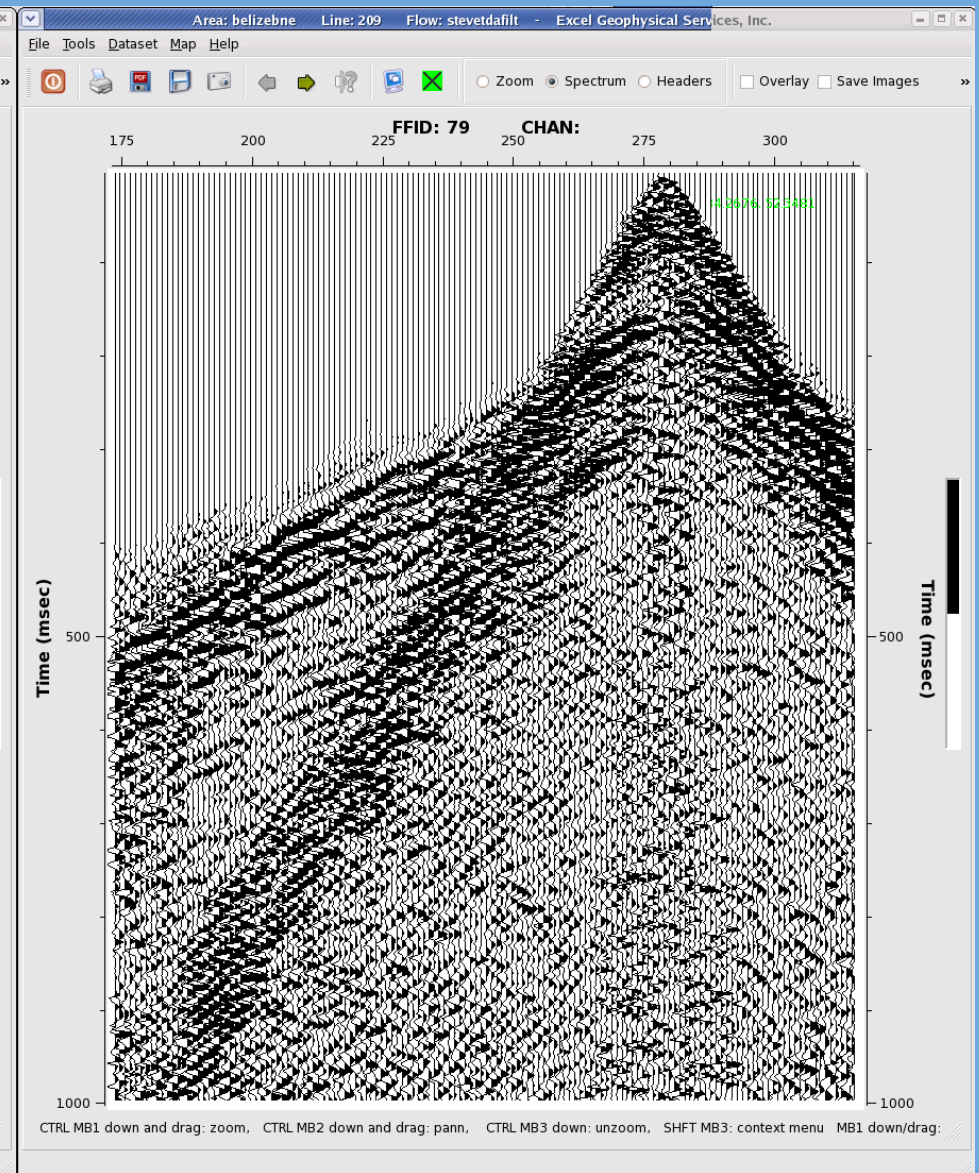
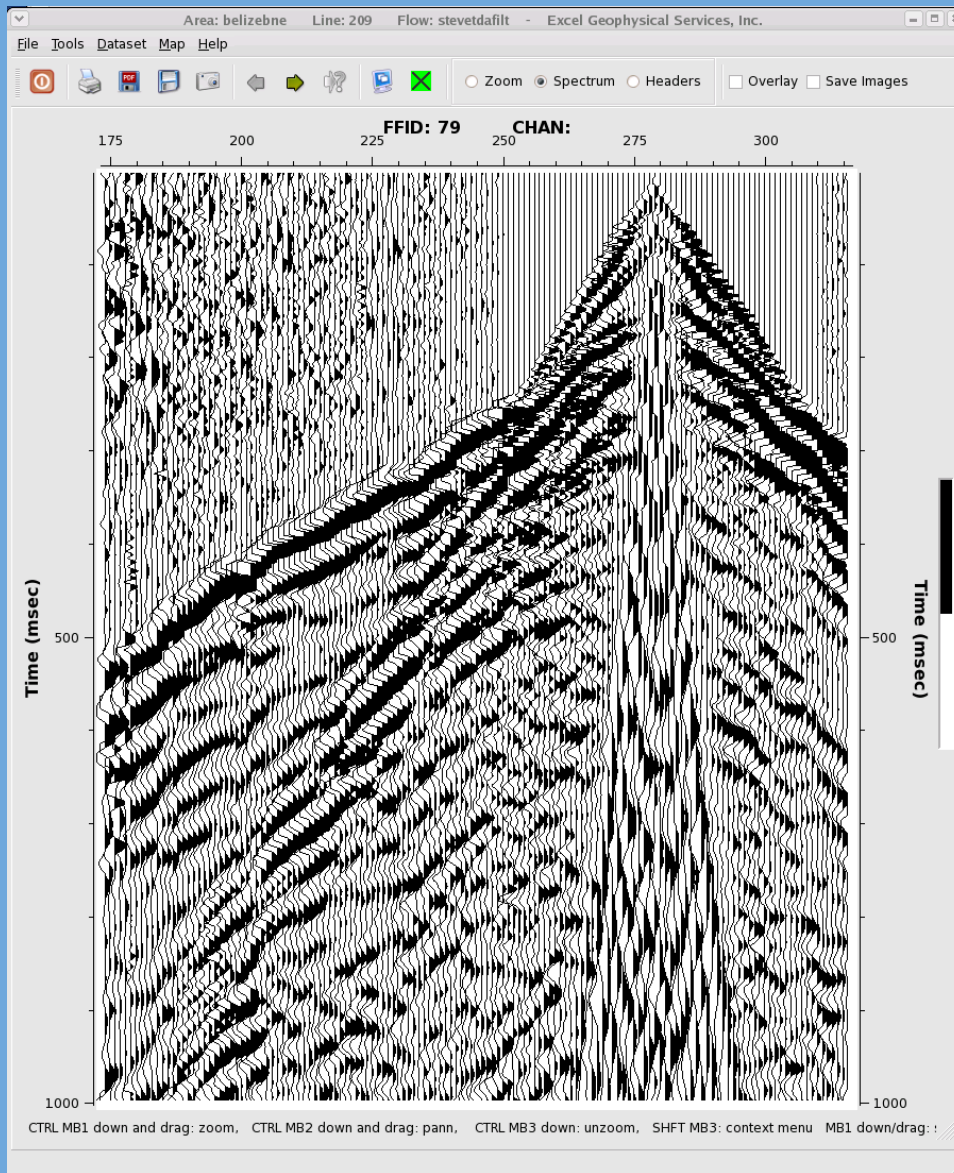
3D Wavenumber Noise Reduction



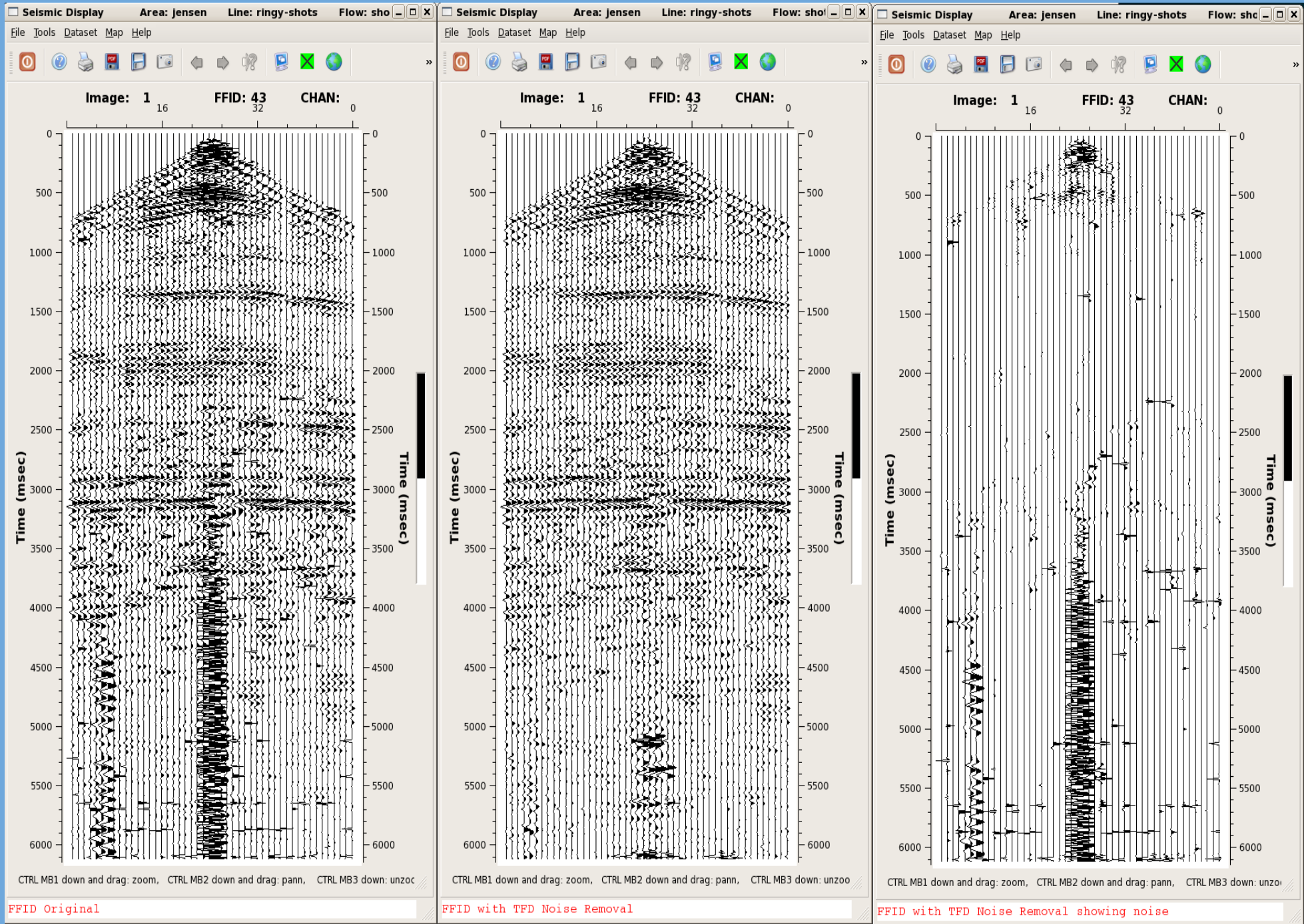
3D Wavenumber Noise Reduction



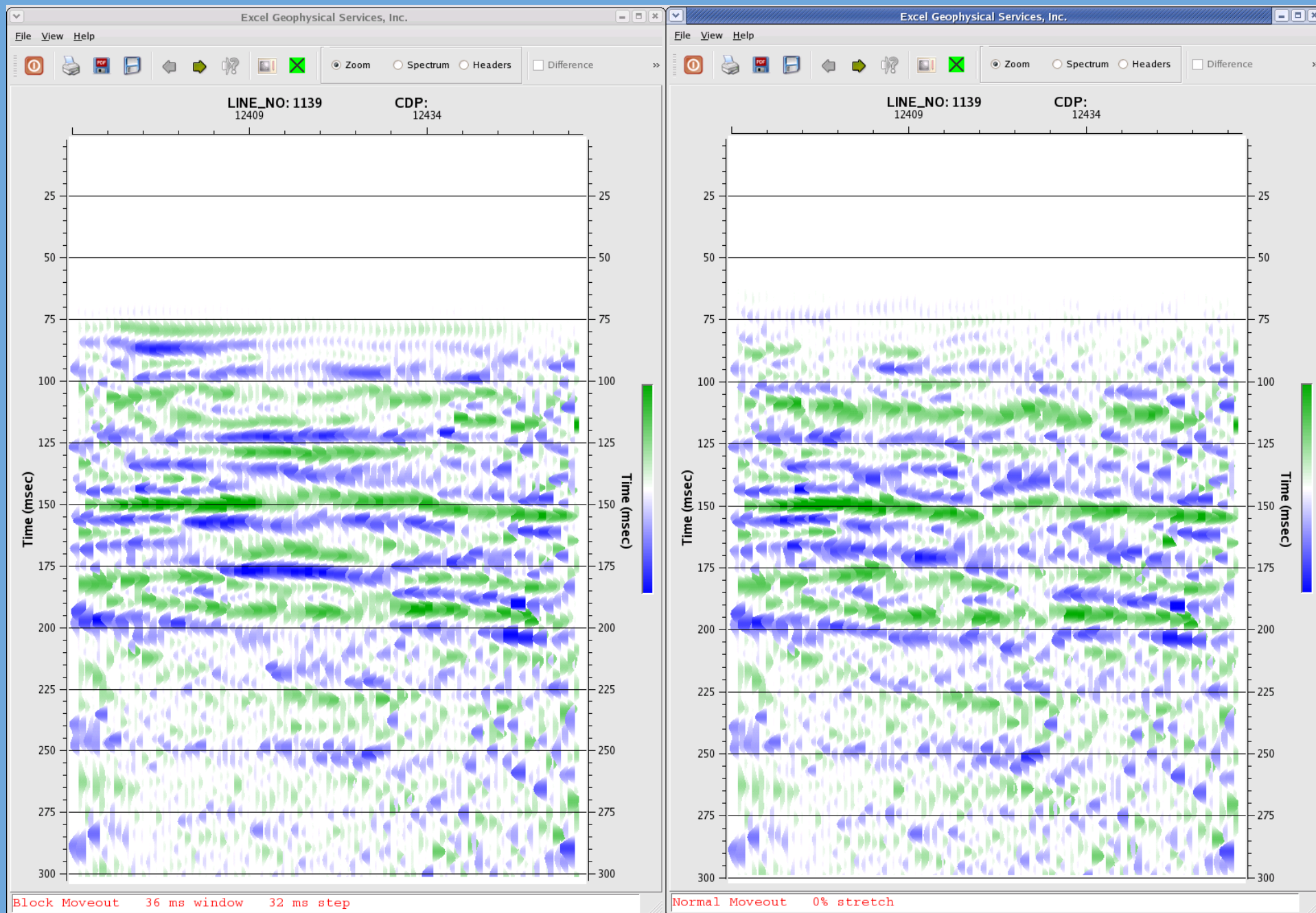
Offset Time Scaling



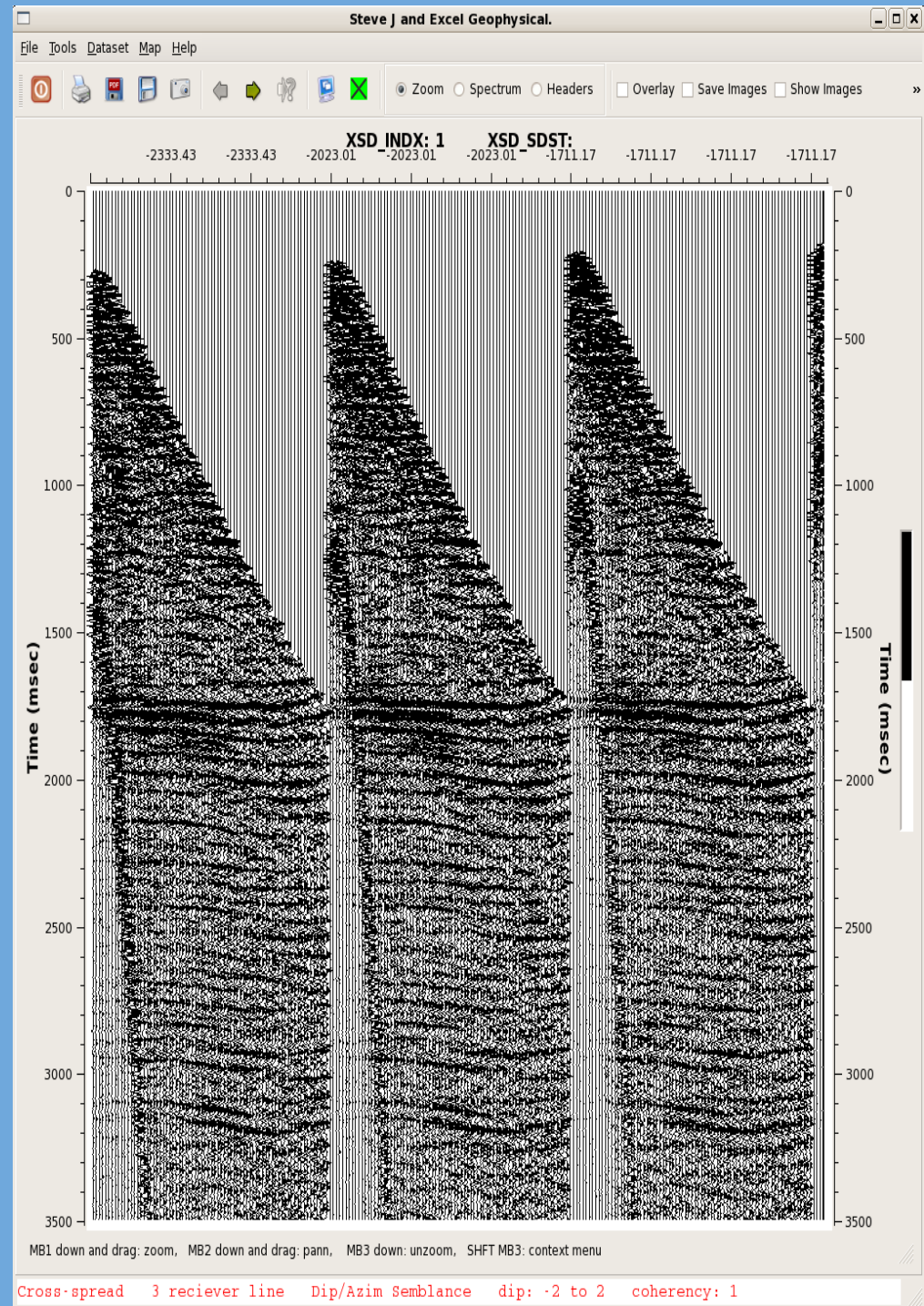
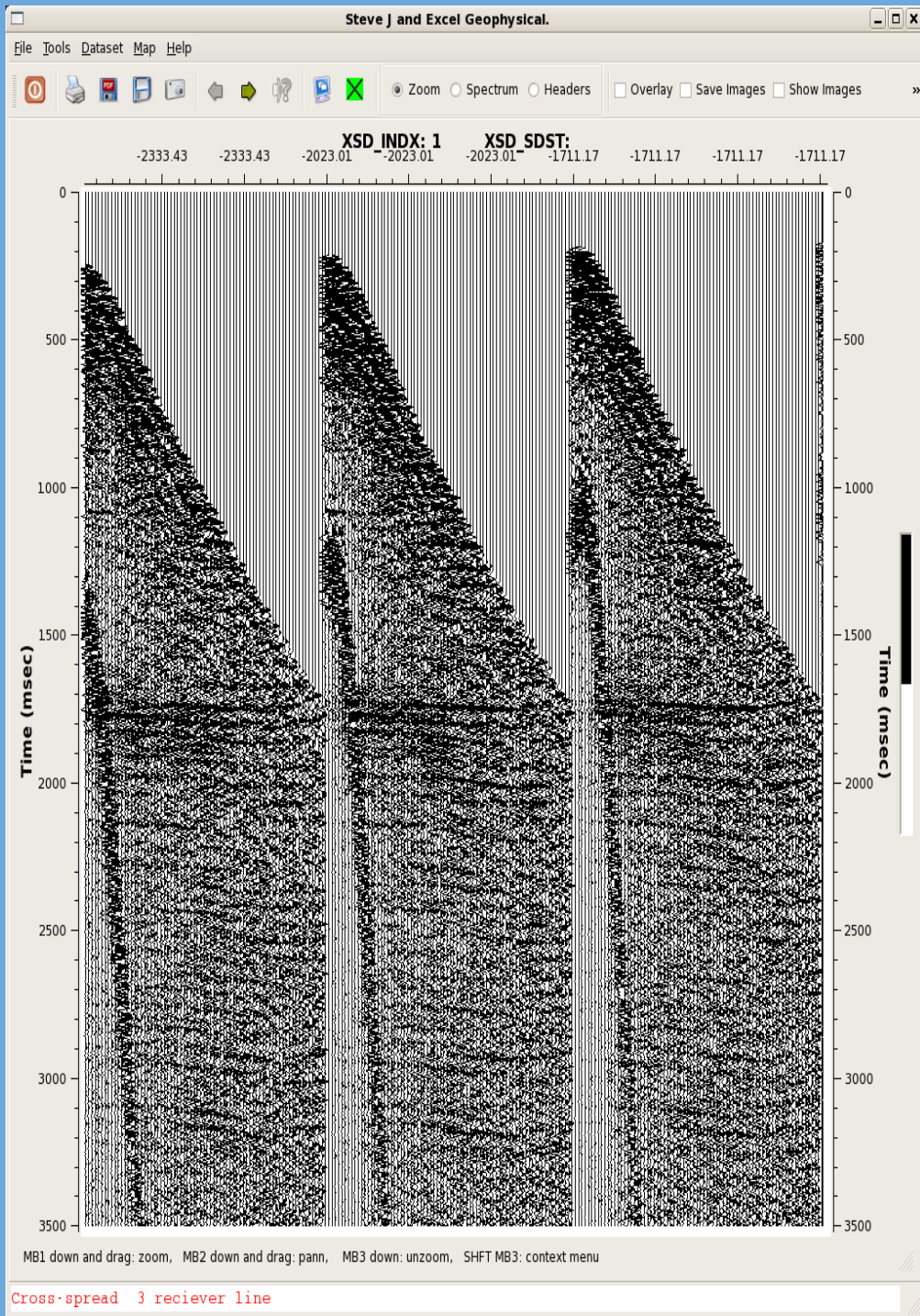
Ring Removal



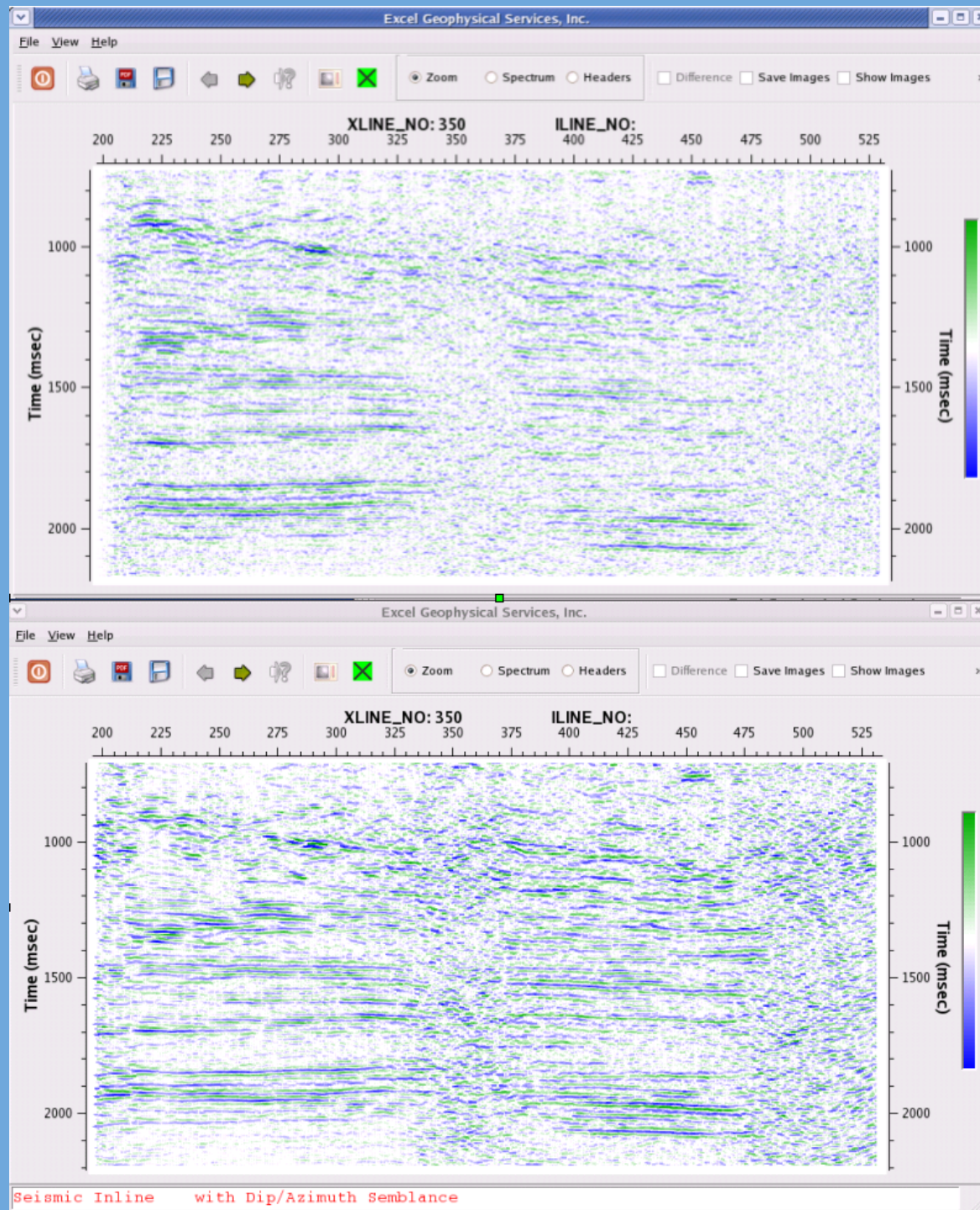
TFD Noise Removal



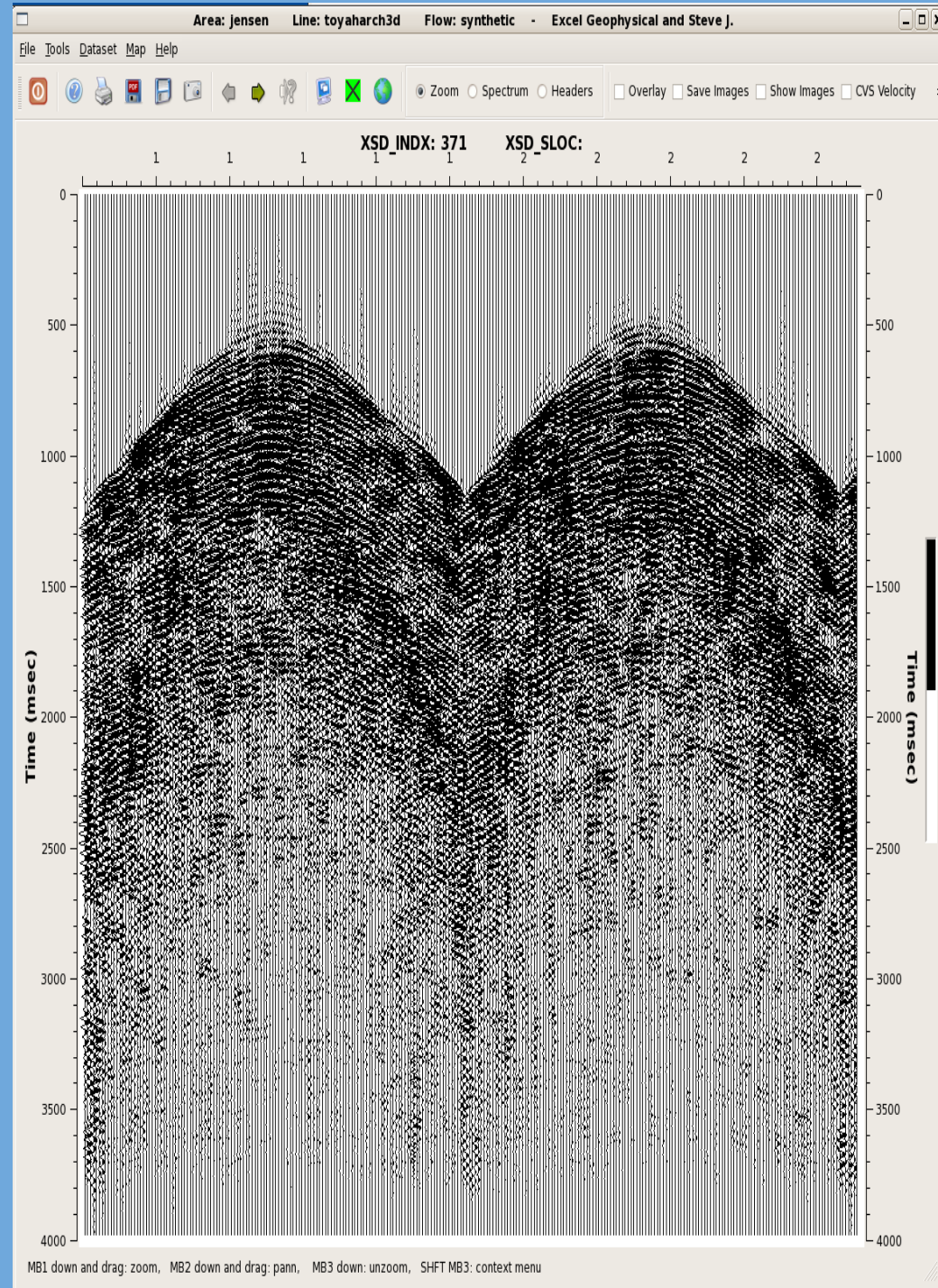
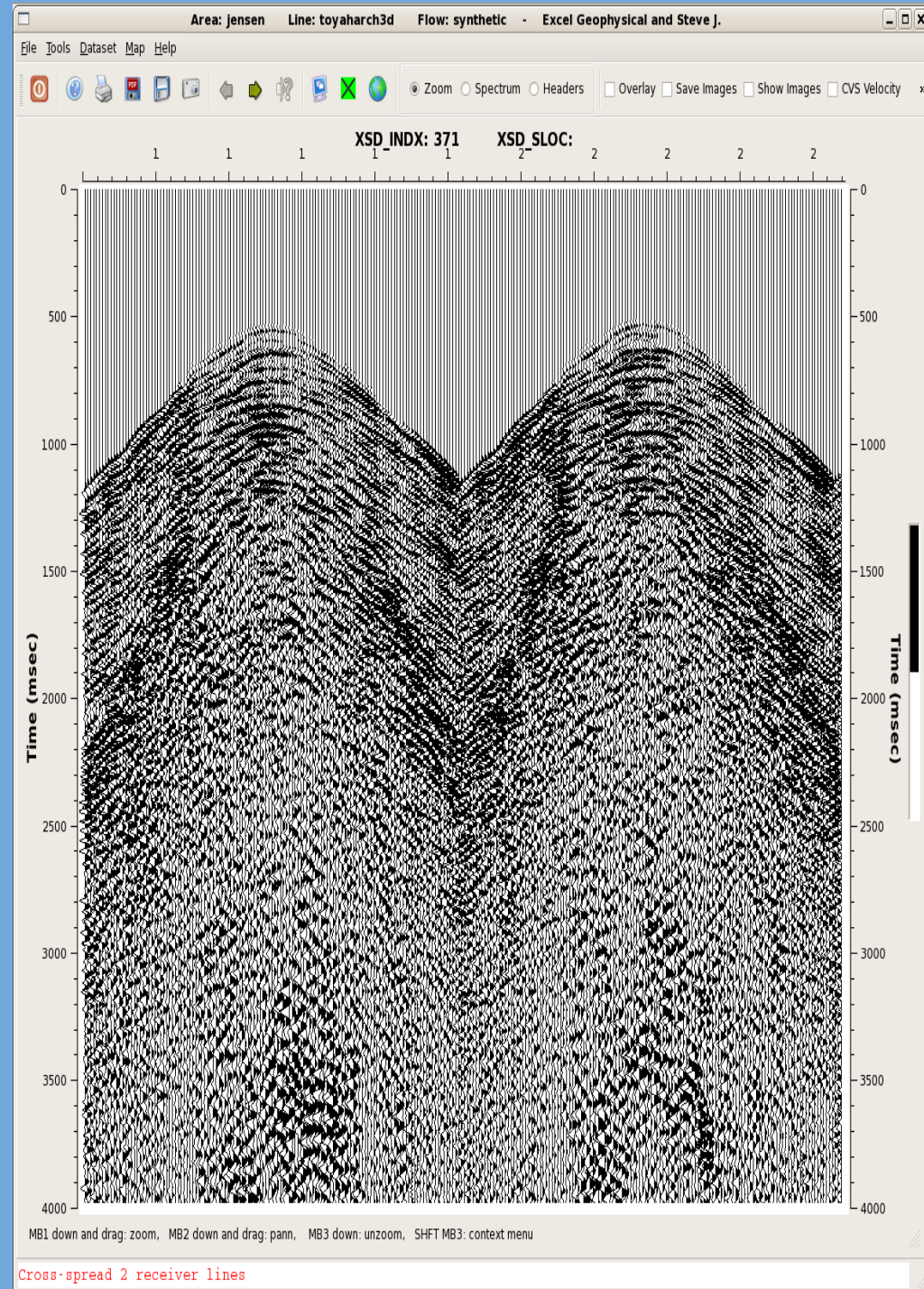
Block Moveout



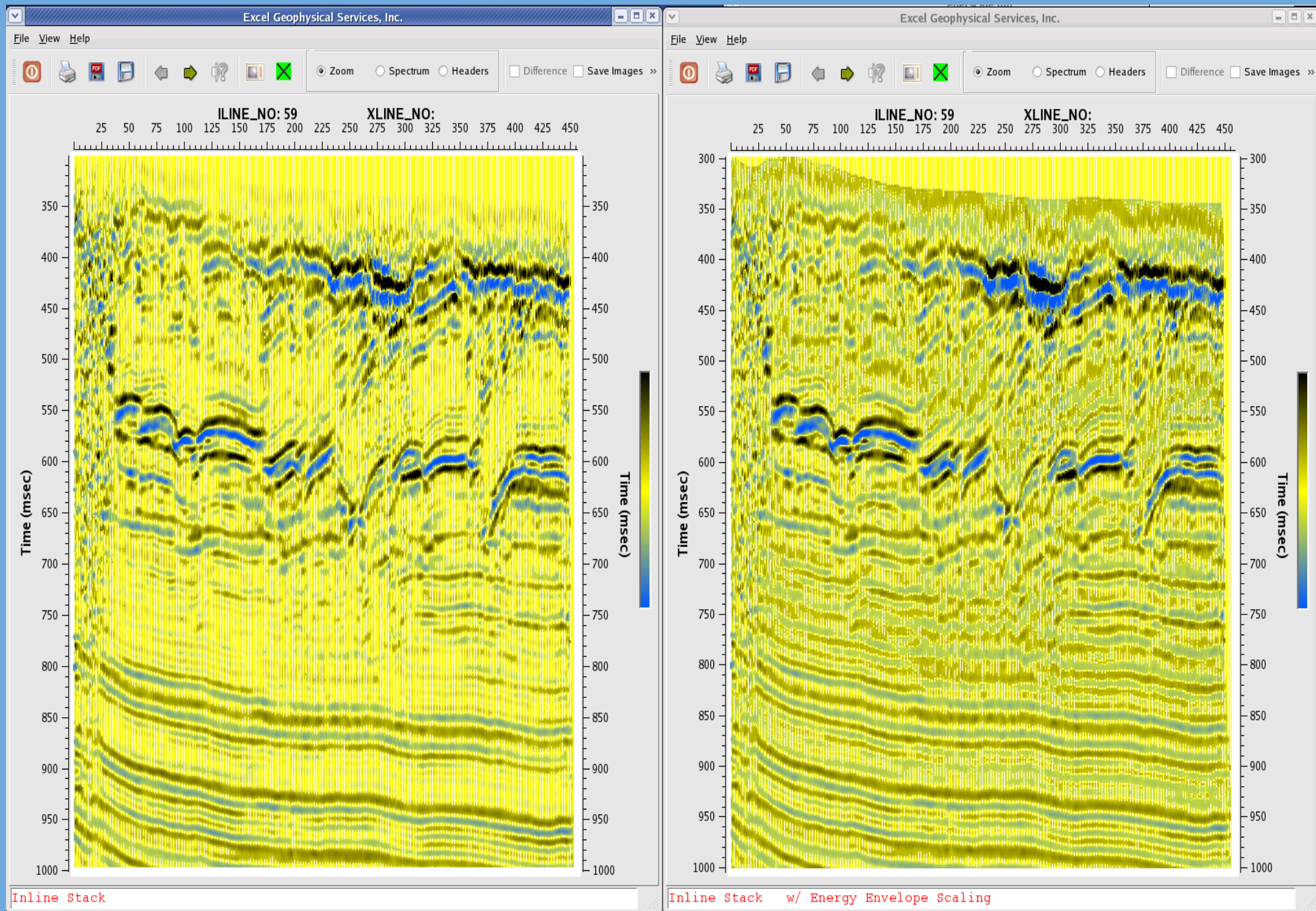
Dip/Azim Semblance - Coherency - Prestack



Dip/Azimuth - Coherency - Poststack



Low Frequency Kx Ky Noise Removal - Crossspreads



Energy Envelope Scaling

Other Seismic Tools

- FXY Interpolation
- Smoothing/Edge Filters
- Rolling SuperGather Create
- Tape Copy
- SEG Y Loader
- SEG D Loader
- Primary/Secondary Exchange
- Vertical Stack
- Trace Killer
- Band-limited Decon
- Normal Move-out
- 3D Partial Extractions
- Hi-Res RHO Filter
- ASCII XY to Z Header
- SVD Filter
- Multi-Channel Adaptive Subtraction